

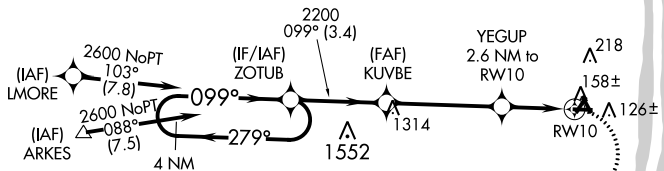
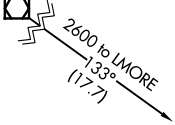
APP CRS	Rwy Idg	NA
099°	TDZE	NA
	Apt Elev	14

RNAV (GPS)-A

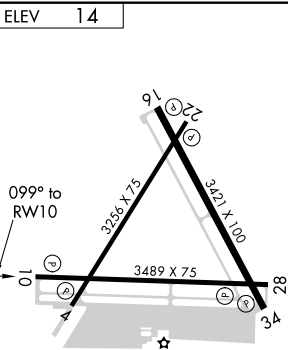
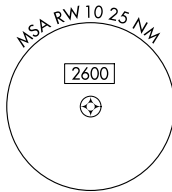
PALM BEACH COUNTY PARK (L.N.A)

<p>▼ DME/DME RNP-0.3 NA. Rwy 10 helicopter visibility reduction below ¼ SM NA. Circling to Rwy's 4, 16, 22, 28, 34 NA at night.</p>		<p>MISSED APPROACH: (Do not exceed 210K until turn completion) Climbing right turn to 2000 direct UGLEE and hold.</p>	
AWOS-3PT 119.925	PALM BEACH APP CON 125.2 343.6	CLNC DEL 127.35	UNICOM 122.7 (CTAF) 0

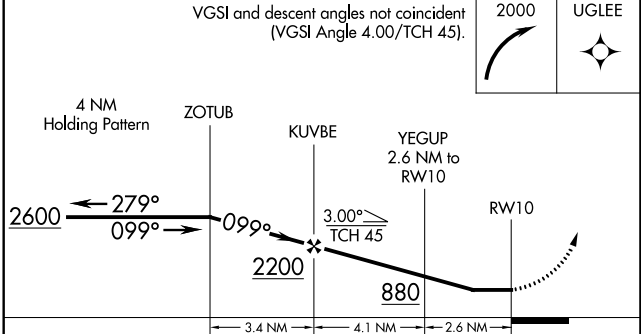
PAHOKEE PHK
Procedure NA for arrival on PHK VOR/DME airway radials 115 CW 211.



Procedure NA for arrivals at ARKES on V159 northbound.



VGSI and descent angles not coincident (VGSI Angle 4.00/TCH 45).



CATEGORY	A	B	C	D
☐ CIRCLING	460-1 446 (500-1)	520-1 506 (600-1)	580-1½ 566 (600-1½)	NA

SE-3, 22 APR 2021 to 20 MAY 2021

SE-3, 22 APR 2021 to 20 MAY 2021