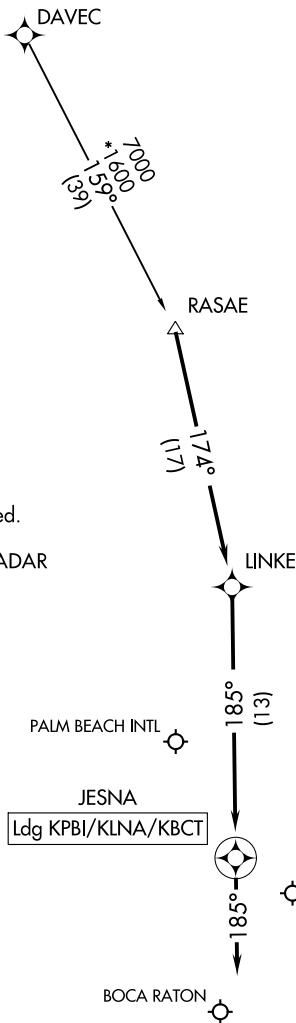


PALM BEACH APP CON
124.6 317.4
PBI D-ATIS
123.75



NOTE: RADAR required.
 NOTE: RNAV 1.
 NOTE: DME/DME/IRU or GPS required.
 NOTE: Turboprop aircraft only.
 NOTE: Landing All Airports: Expect RADAR vectors prior to JESNA.

SE-3, 22 APR 2021 to 20 MAY 2021

SE-3, 22 APR 2021 to 20 MAY 2021

NOTE: Chart not to scale.

ARRIVAL ROUTE DESCRIPTION

DAVEC TRANSITION (DAVEC.RASAE1)

LANDING KPBI/KLNA/KBCT: From RASAE on track 174° to LINKE, then on track 185° to JESNA, then on heading 185° or as assigned by ATC. Expect RADAR vectors to final approach course.