

HI-TACAN RWY 14

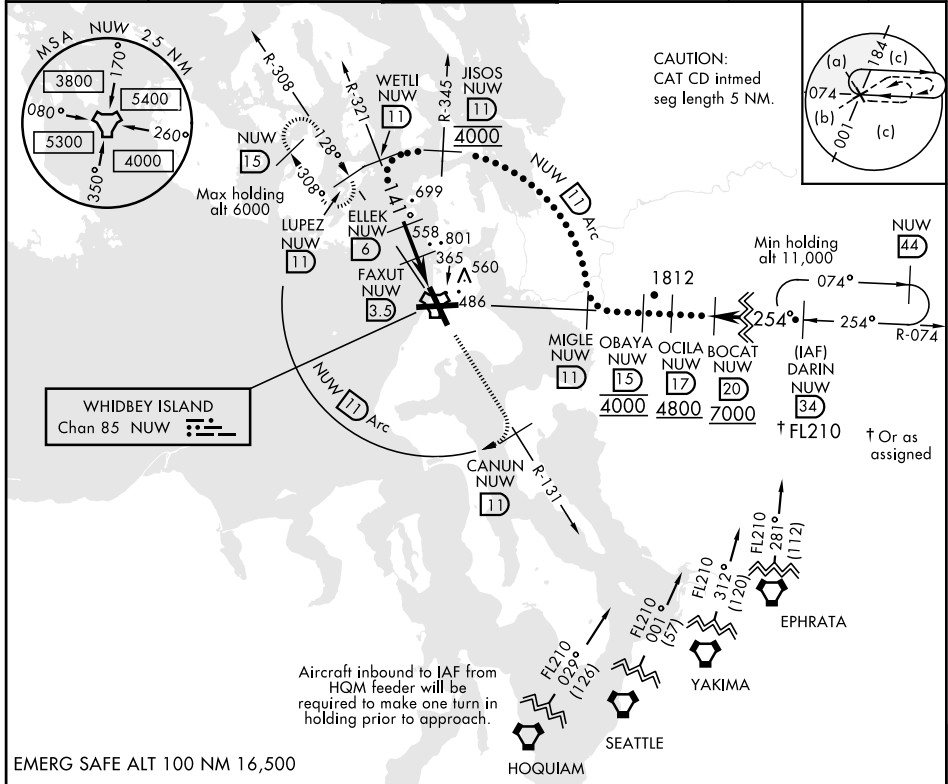
TACAN Chan 85	NUW	APCH CRS 141°	Rwy ldg TDZE Arpt Elev 8000 39 47	JAL-451 [UN]	WHIDBEY ISLAND NAS (AULT FLD) (KNUW)
-------------------------	-----	-------------------------	---	--------------	--------------------------------------

* When ALS inop, increase vis to 1 3/8 miles.

ALS-2

MISSED APPROACH: Climb to 4000 via NUW TACAN R-131 to CANUN, then arc SW of NUW TACAN via 11 DME Arc to LUPEZ and hold.

ATIS 134.15 281.5	WHIDBEY APP CON 120.7 270.8 EAST 118.2 285.65 WEST	WHIDBEY TOWER 127.9 340.2	GND CON 121.75 336.4	CLNC DEL 135.1 379.9	ASR/PAR
-----------------------------	--	-------------------------------------	--------------------------------	--------------------------------	---------



WETLI R-321 (11)	ELLEK (6)	FAXUT (3.5)	JOVPO (1.6)	TACAN (0.8)	4000 NUV R-131	CANUN NUV (11)	NUW (11) Arc	ELEV 47	TDZE 39
3000	1800	1020						141° to TACAN	
2.86° TCH 55									
	2.5 NM	2.7 NM							
CATEGORY	C	D	E						
S-14 *	480-7/8	441 (500-7/8)							
CIRCLING	900-2 1/2 853 (900-2 1/2)	900-2 3/4 853 (900-2 3/4)	1200-3 1153 (1200-3)					TDZ/CL Rwy 14 HIRL Rwy 7-25, 14-32	

HI-TACAN RWY 14

NW-1, 22 APR 2021 to 20 MAY 2021

NW-1, 22 APR 2021 to 20 MAY 2021