

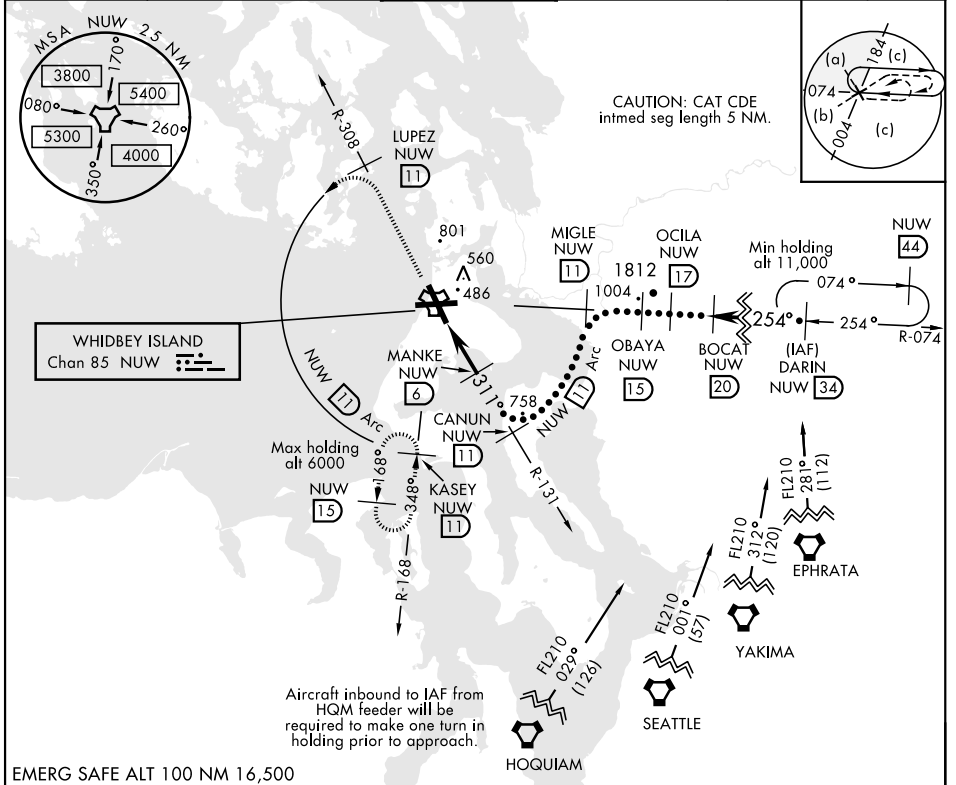
# HI-TACAN RWY 32

TACAN Chan <b>85</b>	NUW	APCH CRS <b>311°</b>	Rwy ldg TDZE <b>47</b> Arpt Elev <b>47</b>	JAL-451 [UN]	WHIDBEY ISLAND NAS (AULT FLD) (KNUW)
-------------------------	-----	-------------------------	--	--------------	--------------------------------------

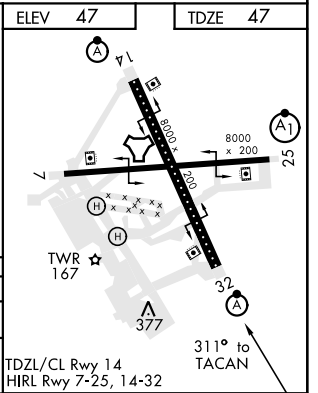
**▼** \* When ALS inop, increase CAT CDE vis to 1 3/8 miles.

ALSF-2  MISSED APPROACH: Climb to 3000 via NUW TACAN R-308 to LUPEZ, then arc W of NUW via 11 DME Arc to KASEY and hold.

ATIS <b>134.15 281.5</b>	WHIDBEY APP CON <b>120.7 270.8 EAST</b> <b>118.2 285.65 WEST</b>	WHIDBEY TOWER <b>127.9 340.2</b>	GND CON <b>121.75 336.4</b>	CLNC DEL <b>135.1 379.9</b>	ASR/PAR
-----------------------------	--	-------------------------------------	--------------------------------	--------------------------------	---------



EMERG SAFE ALT 100 NM 16,500			ELEV 47	TDZE 47
3000 NUW R-308	LUPEZ NUW 11	NUW Arc 11		
TACAN	NAVOE 1.8	MANKE 2.6		
4.2 NM				
CATEGORY	C	D	E	
S-32*	660-1 3/8	613 (700-1 3/8)		
CIRCLING	900-2 1/2 853 (900-2 1/2)	900-2 3/4 853 (900-2 3/4)	1200-3 1153 (1200-3)	



# HI-TACAN RWY 32

NW-1, 22 APR 2021 to 20 MAY 2021

NW-1, 22 APR 2021 to 20 MAY 2021