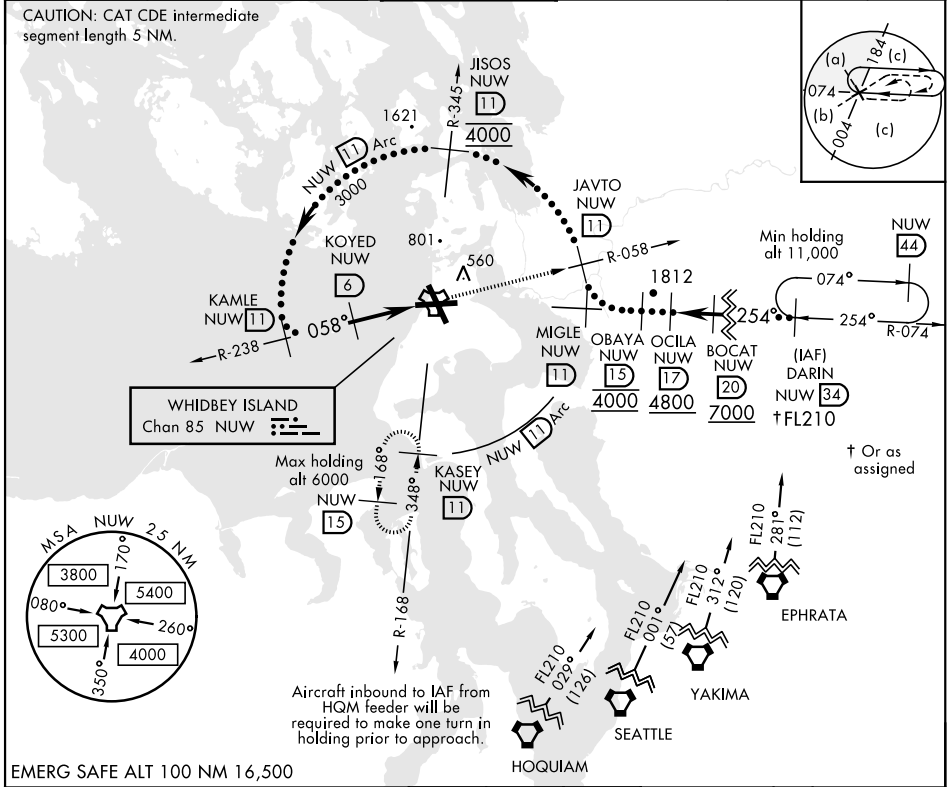


# HI-TACAN RWY 7

TACAN Chan <b>85</b>	APCH CRS <b>058°</b>	Rwy ldg TDZE Arpt Elev <b>8000</b> <b>25</b> <b>47</b>	JAL-451 [USN]	WHIDBEY ISLAND NAS (AULT FLD) (KNUW)
-------------------------	-------------------------	---	---------------	--------------------------------------

**▼** MISSED APPROACH: Climb to 3000 via NUW TACAN R-058 to JAVTO, then arc SE of NUW via 11 DME Arc to KASEY and hold.

ATIS <b>134.15 281.5</b>	WHIDBEY APP CON <b>120.7 270.8 EAST</b> <b>118.2 285.65 WEST</b>	WHIDBEY TOWER <b>127.9 340.2</b>	GND CON <b>121.75 336.4</b>	CLNC DEL <b>135.1 379.9</b>	ASR/PAR
-----------------------------	--	-------------------------------------	--------------------------------	--------------------------------	---------



NW-1, 22 APR 2021 to 20 MAY 2021

NW-1, 22 APR 2021 to 20 MAY 2021

EMERG SAFE ALT 100 NM 16,500			ELEV 47		TDZE 25
			3000 NUW R-058	JAVTO NUW 11	NUW 11 Arc
CATEGORY	C	D	E		
S-7	400-1	375 (400-1)			
CIRCLING	900-2½ 853 (900-2½)	900-2¾ 853 (900-2¾)	1200-3 1153 (1200-3)		
			TDZ/CL Rwy 14 HIRL Rwy 7-25, 14-32		

# HI-TACAN RWY 7