

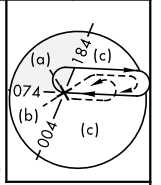
HI-TACAN Z RWY 25

TACAN NUW Chan 85	APCH CRS 254°	Rwy Idg 8000 TDZE 28 Arprt Elev 47	JAL-451 [USN]	WHIDBEY ISLAND NAS (AULT FLD) (KNUW)
----------------------	------------------	---	---------------	--------------------------------------

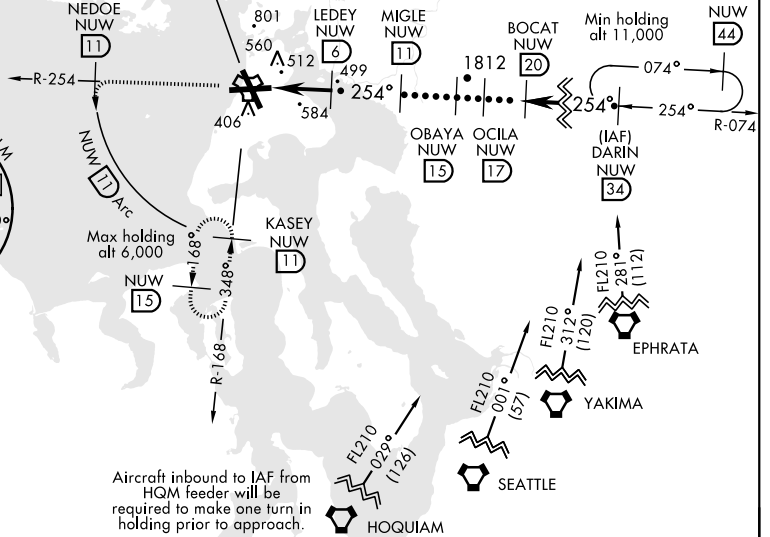
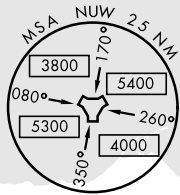
<p>▼ * When ALS inop, increase CAT CDE vis to 2 miles.</p>	<p>ALSF-1</p>	<p>MISSED APPROACH: Climb to 3000 via NUW TACAN R-254 to NEDOE, then arc SW of NUW via 11 DME arc to KASEY and hold.</p>
--	---------------	--

<p>ATIS 134.15 281.5</p>	<p>WHIDBEY APP CON 120.7 270.8 EAST 118.2 285.65 WEST</p>	<p>WHIDBEY TOWER 127.9 340.2</p>	<p>GND CON 121.75 336.4</p>	<p>CLNC DEL 135.1 379.9</p>	<p>ASR/PAR</p>
------------------------------	---	--------------------------------------	---------------------------------	---------------------------------	----------------

CAUTION:
Intmed seg length 5 NM.



WHIDBEY ISLAND
Chan 85 NUW



NW-1, 22 APR 2021 to 20 MAY 2021

NW-1, 22 APR 2021 to 20 MAY 2021

EMERG SAFE ALT 100 NM 16,500

<p>3000 NUW R-254</p>	<p>NEDOE NUW (11)</p>	<p>NUW (11)</p>	ELEV 47	TDZE 28
CATEGORY	C		D	E
S-25*	740-1 5/8		712	(700-1 1/8)
CIRCLING	900-2 1/2 853 (900-2 1/2)	900-2 3/4 853 (900-2 3/4)	1200-3 1153 (1200-3)	
<p>TDZL/CL Rwy 14 HIRL Rwy 7-25, 14-32</p>				

HI-TACAN Z RWY 25