

OAK HARBOR, WASHINGTON

ILS or LOC/DME RWY 14

LOC/DME I-NUW 110.1 Chan 38	APCH CRS 137°	Rwy Idg TDZE Arpt Elev 8000 39 47
-------------------------------------------------	-------------------------	-----------------------------------------------------------------------

AL-451 [USN]

WHIDBEY ISLAND NAS (AULT FLD) (KNUW)

VOR, DME required.
* When ALS inop, increase vis to ¾ mile.



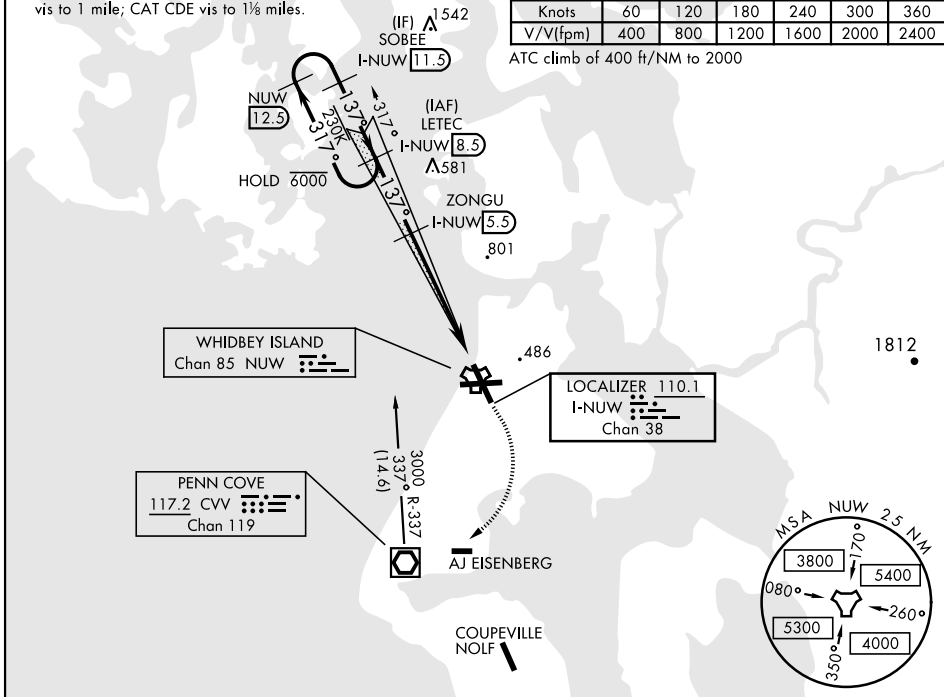
MISSED APPROACH: Climb to 2000 via hdg 137°, then climbing right turn to 3000, direct CVV VOR/DME, then via CVV R-337 to LETEC and hold.

ATIS 134.15 281.5	WHIDBEY APP CON 120.7 270.8 EAST 118.2 285.65 WEST	WHIDBEY TOWER 127.9 340.2	GND CON 121.75 336.4	CLNC DEL 135.1 379.9	ASR/PAR
-----------------------------	------------------------------------------------------------------------	-------------------------------------	--------------------------------	--------------------------------	---------

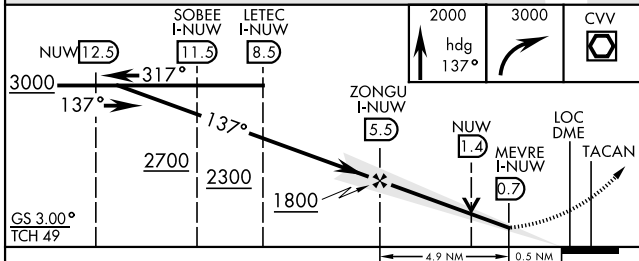
** When ALS inop, increase CAT AB vis to 1 mile; CAT CDE vis to 1½ miles.

Knots	60	120	180	240	300	360
V/V(fpm)	400	800	1200	1600	2000	2400

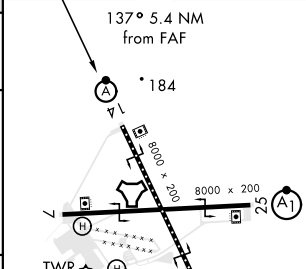
ATC climb of 400 ft/NM to 2000



EMERG SAFE ALT 100 NM 16,500



ELEV 47	TDZE 39
---------	---------



CATEGORY	A	B	C	D	E
S-ILS 14 *	239-½		200 (200-½)		
S-LOC 14 **	420-½	381 (400-½)	420-⅝		381 (400-⅝)
CIRCLING	700-1	800-1	900-2½	900-2¾	1200-3
	653 (700-1)	753 (800-1)	853 (900-2½)	853 (900-2¾)	1153 (1200-3)

HIRL Rwy 7-25, 14-32
TDZL/CL Rwy 14

OAK HARBOR, WASHINGTON

48°21'N-122°39'W

WHIDBEY ISLAND NAS (AULT FLD) (KNUW)

Orig 22APR21

ILS or LOC/DME RWY 14

NW-1, 22 APR 2021 to 20 MAY 2021

NW-1, 22 APR 2021 to 20 MAY 2021