

OAK HARBOR, WASHINGTON

# RNAV (GPS) RWY 7

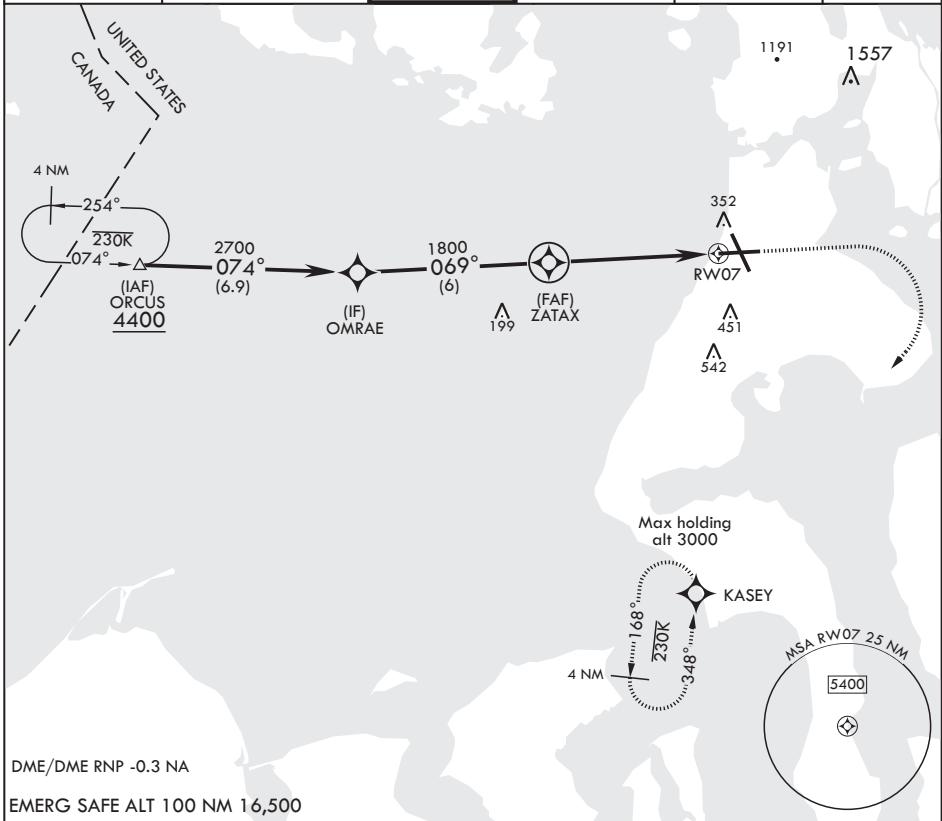
APCH CRS	Rwy Idg	<b>8000</b>
<b>069°</b>	TDZE	<b>25</b>
	Arprt Elev	<b>47</b>

AL-451 (USN)

WHIDBEY ISLAND NAS (KNUW)

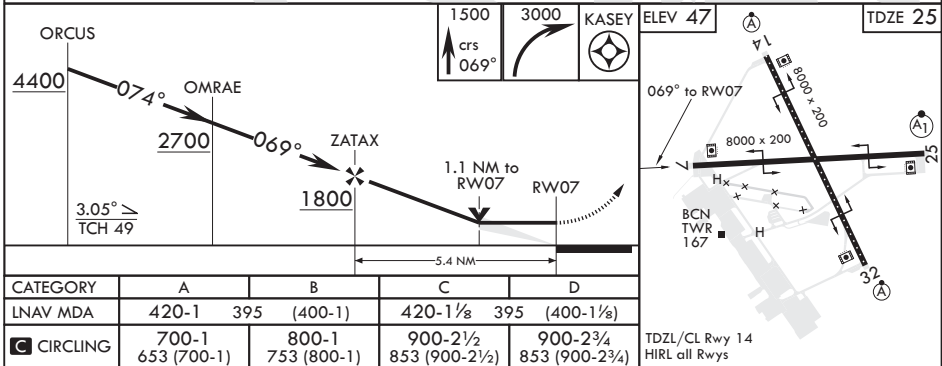
**MISSED APPROACH:** Climb to 1500, then climbing right turn to 3000 direct KASEY and hold. Do not exceed 230 KIAS until turn completion.

ATIS <b>134.15 281.5</b>	APP CON/DEP CON <b>118.2 285.65 W</b> <b>120.7 270.8 E</b>	<b>TOWER</b> <b>127.9 340.2</b>	GND CON <b>121.75 336.4</b>	CLNC DEL <b>135.1 379.9</b>	ASR/PAR
-----------------------------	--	------------------------------------	--------------------------------	--------------------------------	---------



DME/DME RNP -0.3 NA

EMERG SAFE ALT 100 NM 16,500



CATEGORY	A	B	C	D
LNAV MDA	420-1 395 (400-1)	420-1½ 395 (400-1½)	420-1½ 395 (400-1½)	420-1½ 395 (400-1½)
<b>CIRCLING</b>	700-1 653 (700-1)	800-1 753 (800-1)	900-2½ 853 (900-2½)	900-2¾ 853 (900-2¾)

TDZL/CL Rwy 14  
HIRL all Rwys

OAK HARBOR, WASHINGTON

48°21'N - 122°39'W

WHIDBEY ISLAND NAS (KNUW)

Amdt 1 21MAY20

# RNAV (GPS) RWY 7

NW-1, 22 APR 2021 to 20 MAY 2021

NW-1, 22 APR 2021 to 20 MAY 2021