

OAK HARBOR, WASHINGTON

TACAN RWY 25

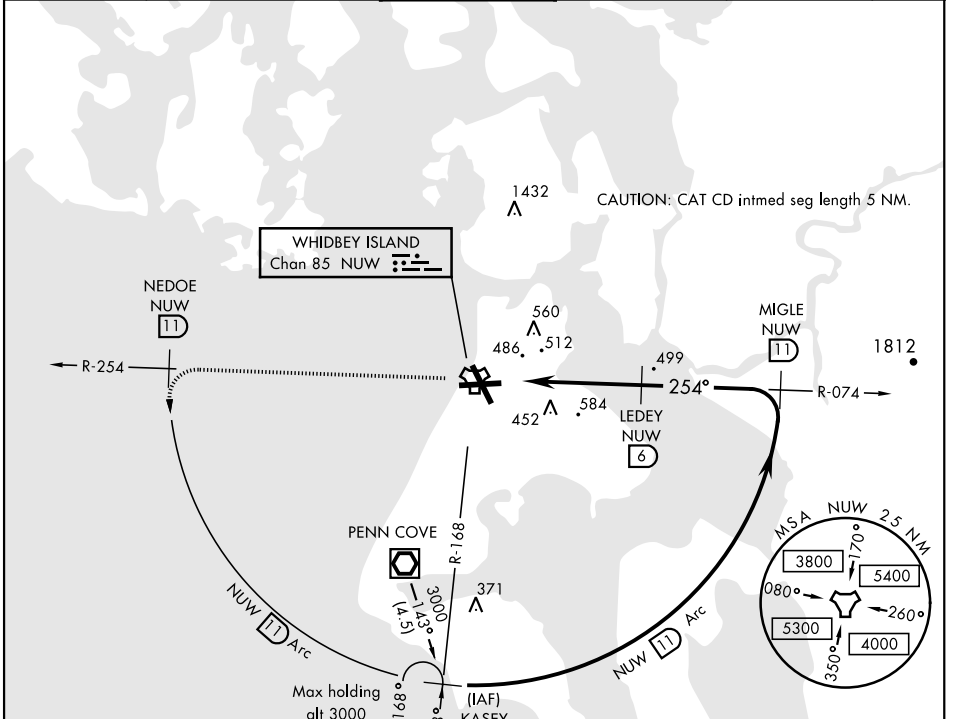
TACAN Chan 85	APCH CRS 254°	Rwy Idg TDZE Arprt Elev 8000 28 47
-------------------------	-------------------------	--

AL-451 [USN]

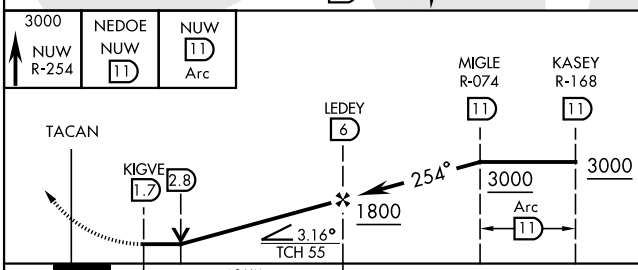
WHIDBEY ISLAND NAS (AULT FLD) (KNUW)

<p>▼ * When ALS inop, increase CAT AB vis to 1 mile, CAT CD to 2 miles.</p>	<p>ALSF-1</p>	<p>MISSED APPROACH: Climb to 3000 via NUW TACAN R-254 to NEDOE, then arc SW of NUW via 11 DME Arc to KASEY and hold.</p>
	<p>WHIDBEY ISLAND NAS (AULT FLD) (KNUW)</p>	

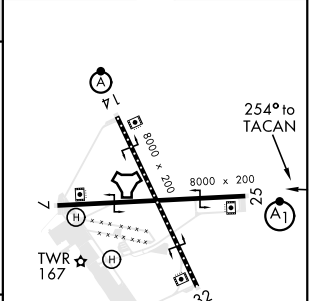
<p>ATIS 134.15 281.5</p>	<p>WHIDBEY APP CON 120.7 270.8 118.2 285.65 EAST WEST</p>	<p>WHIDBEY TOWER 127.9 340.2</p>	<p>GND CON 121.75 336.4</p>	<p>CLNC DEL 135.1 379.9</p>	<p>ASR/PAR</p>
-------------------------------------	---	---	--	--	----------------



EMERG SAFE ALT 100 NM 16,500



ELEV 47	TDZE 28
---------	---------



CATEGORY	A	B	C	D
S-25 *	740- $\frac{5}{8}$	712 (700- $\frac{5}{8}$)	740-1 $\frac{1}{2}$	712 (700-1 $\frac{1}{2}$)
CIRCLING	760-1 713 (800-1)	800-1 753 (800-1)	900-2 $\frac{1}{2}$ 853 (900-2 $\frac{1}{2}$)	900-2 $\frac{3}{4}$ 853 (900-2 $\frac{3}{4}$)

TDZL/CL Rwy 14
HIRL Rwy 7-25, 14-32

OAK HARBOR, WASHINGTON

48° 21' N - 122° 39' W

WHIDBEY ISLAND NAS (AULT FLD) (KNUW)

Amdt 2 21MAY20

TACAN RWY 25

NW-1, 22 APR 2021 to 20 MAY 2021

NW-1, 22 APR 2021 to 20 MAY 2021