

TACAN RWY 32

TACAN NUW Chan 85	APCH CRS 311°	Rwy ldg 8000 TDZE 47 Arprt Elev 47
-----------------------------	-------------------------	---

AL-451 [USN]

WHIDBEY ISLAND NAS (AULT FLD) (KNUW)

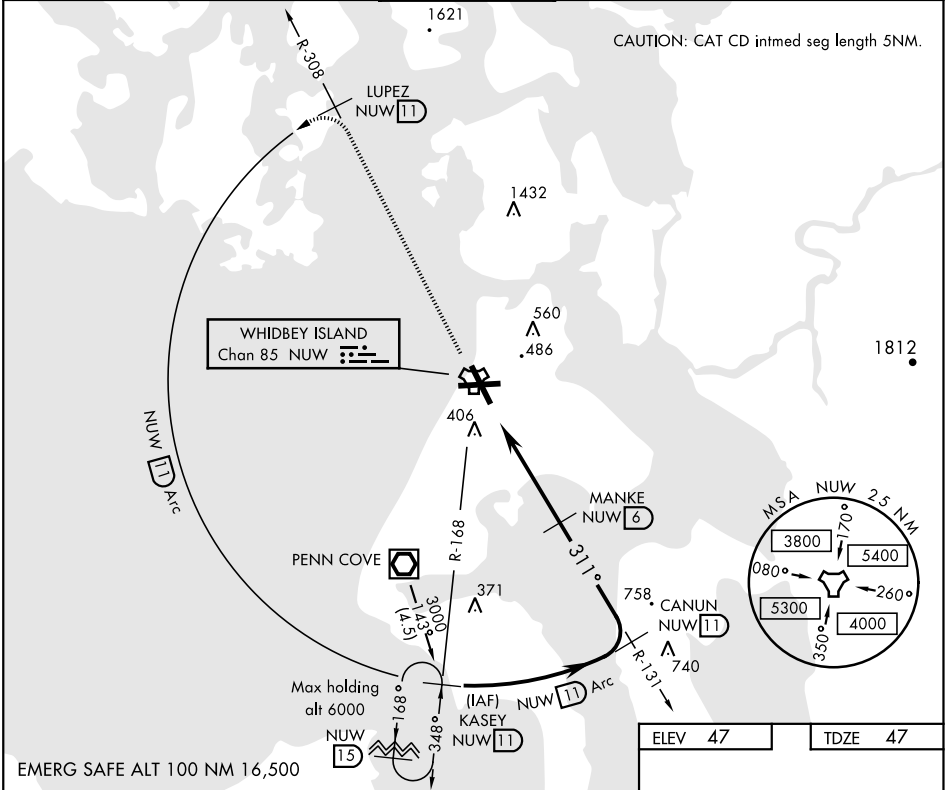
▼ * When ALS inop, increase CAT AB vis to 1 mile, CAT CD to 1¼ miles.



MISSED APPROACH: Climb to 3000 via NUW TACAN R-308 to LUPEZ, then Arc SW of NUW via 11 DME Arc to KASEY and hold.

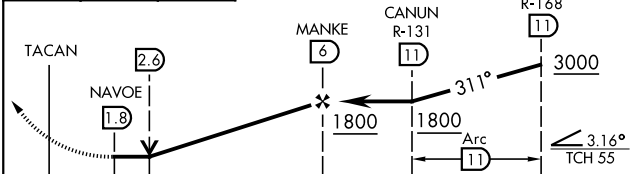
ATIS 134.15 281.5	WHIDBEY APP CON 120.7 270.8 EAST 118.2 285.65 WEST	WHIDBEY TOWER 127.9 340.2	GND CON 121.75 336.4	CLNC DEL 135.1 379.9	ASR/PAR
-----------------------------	--	-------------------------------------	--------------------------------	--------------------------------	---------

CAUTION: CAT CD intmed seg length 5NM.



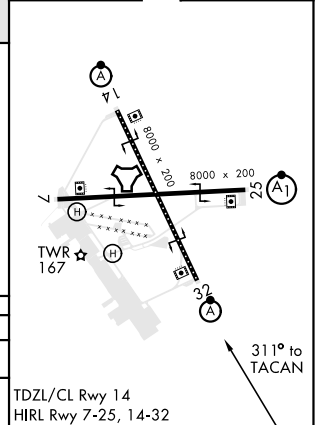
EMERG SAFE ALT 100 NM 16,500

3000 NUW R-308	LUPEZ NUW 11	NUW 11 Arc
----------------------	--------------------	------------------



CATEGORY	A	B	C	D
S-32*	660-5/8 613 (700-5/8)		660-13/8 613 (700-13/8)	
CIRCLING	760-1 713 (800-1)	800-1 753 (800-1)	900-2 1/2 853 (900-2 1/2)	900-2 3/4 853 (900-2 3/4)

ELEV 47	TDZE 47
---------	---------



NW-1, 22 APR 2021 to 20 MAY 2021

NW-1, 22 APR 2021 to 20 MAY 2021

TACAN RWY 32