

TACAN RWY 7

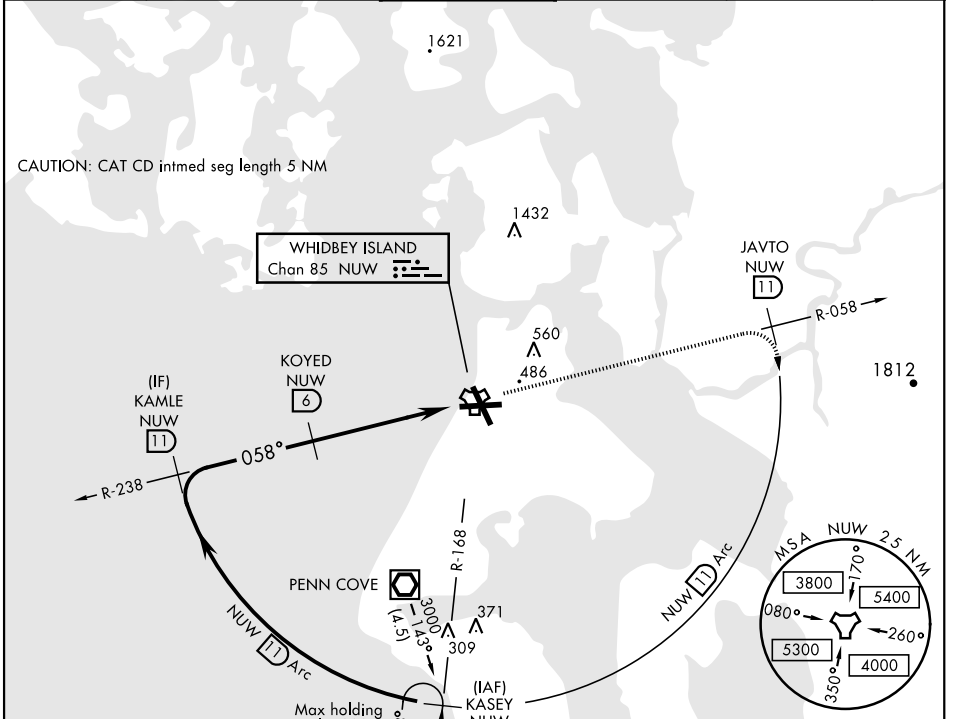
TACAN Chan	NUW 85	APCH CRS	058°	Rwy ldg TDZE	8000 25
				Arprt Elev	47

AL-451 [USN]

WHIDBEY ISLAND NAS (AULT FLD) (KNUW)

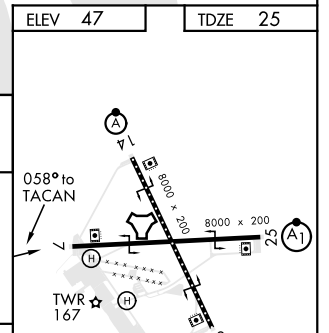
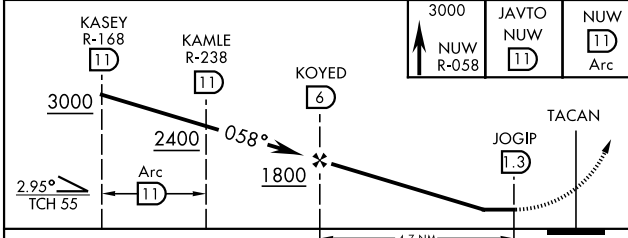
▼ MISSED APPROACH: Climb to 3000 via NUW TACAN R-058 to JAVTO, then arc SE of NUW via 11 DME Arc to KASEY and hold.

ATIS	WHIDBEY APP CON	WHIDBEY TOWER	GND CON	CLNC DEL	ASR/PAR
134.15 281.5	120.7 270.8 EAST 118.2 285.65 WEST	127.9 340.2	121.75 336.4	135.1 379.9	



ELEV	47	TDZE	25
------	----	------	----

EMERG SAFE ALT 100 NM 16,500



CATEGORY	A	B	C	D	TDZL/CL Rwy 14	HIRL Rwy 7-25, 14-32
S-7		400-1	375 (400-1)			
CIRCLING	760-1 713 (800-1)	800-1 753 (800-1)	900-2½ 853 (900-2½)	900-2¾ 853 (900-2¾)		

TACAN RWY 7

NW-1, 22 APR 2021 to 20 MAY 2021

NW-1, 22 APR 2021 to 20 MAY 2021