

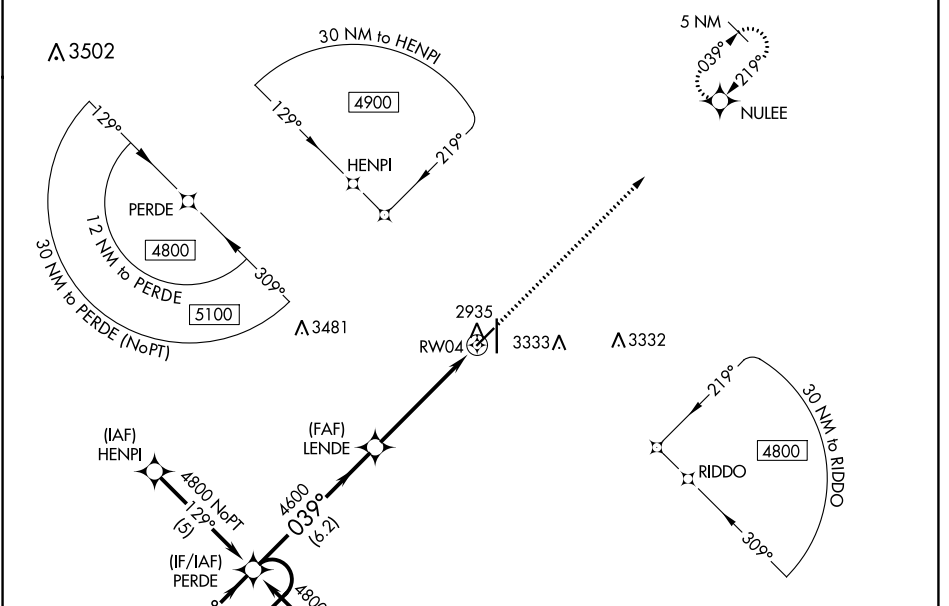
WAAS CH <b>72905</b> <b>W04A</b>	APP CRS <b>039°</b>	Rwy Idg TDZE Apt Elev	<b>5000</b> <b>2886</b> <b>2886</b>
--	------------------------	-----------------------------	---

**RNAV (GPS) RWY 4**  
LIBERAL MID-AMERICA RGNL (L.B.L.)

**⚠** For uncompensated Baro-VNAV systems, LNAV/VNAV NA below -20°C (-4°F) or above 54°C (130°F). Circling NA east of Rwy 17-35. DME/DME RNP-0.3 NA. When local altimeter setting not received, use Guymon Muni altimeter setting: increase all DA 112 feet and all MDA 120 feet; increase all visibilities 3/8 mile. Baro-VNAV NA when using Guymon Muni altimeter setting. VDP NA when using Guymon Muni altimeter setting. Helicopter visibility reduction below 3/4 SM NA.

MISSED APPROACH:  
Climb to 4800 direct NULEE and hold.

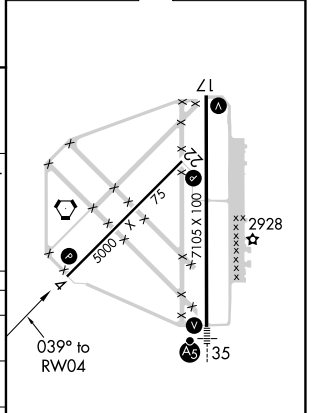
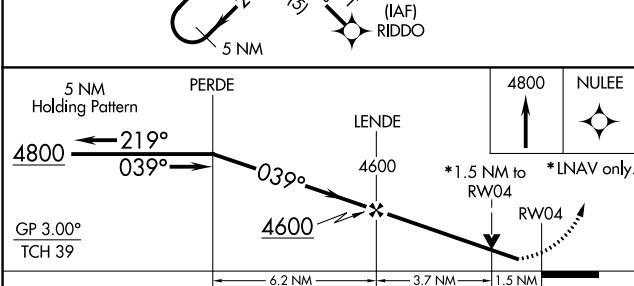
AWOS-3PT <b>118.375</b>	KANSAS CITY CENTER <b>134.0 257.865</b>	UNICOM <b>122.8 (CTAF) Ⓛ</b>
----------------------------	--	---------------------------------



NC-2, 22 APR 2021 to 20 MAY 2021

NC-2, 22 APR 2021 to 20 MAY 2021

ELEV 2886	<b>D</b> TDZE 2886
-----------	--------------------



CATEGORY	A	B	C	D
LPV DA		3136-7/8	250 (300-7/8)	
LNAV/VNAV DA		3300-13/8	414 (500-13/8)	
LNAV MDA	3400-1	514 (600-1)	3400-13/8	514 (600-13/8)
<b>C</b> CIRCLING	3400-1	514 (600-1)	3400-1 1/2	3440-2
			514 (600-1 1/2)	554 (600-2)

REIL Rws 4, 17 and 22 Ⓛ  
MIRL Rwy 4-22 Ⓛ  
HIRL Rwy 17-35 Ⓛ