

CATHEDRAL ONE DEPARTURE

AL-545 (FAA)

PALM SPRINGS INTL (PSP)
PALM SPRINGS, CALIFORNIA

SW-3, 22 APR 2021 to 20 MAY 2021

MINIMUM CROSSING ALTITUDES FOR PSP VORTAC

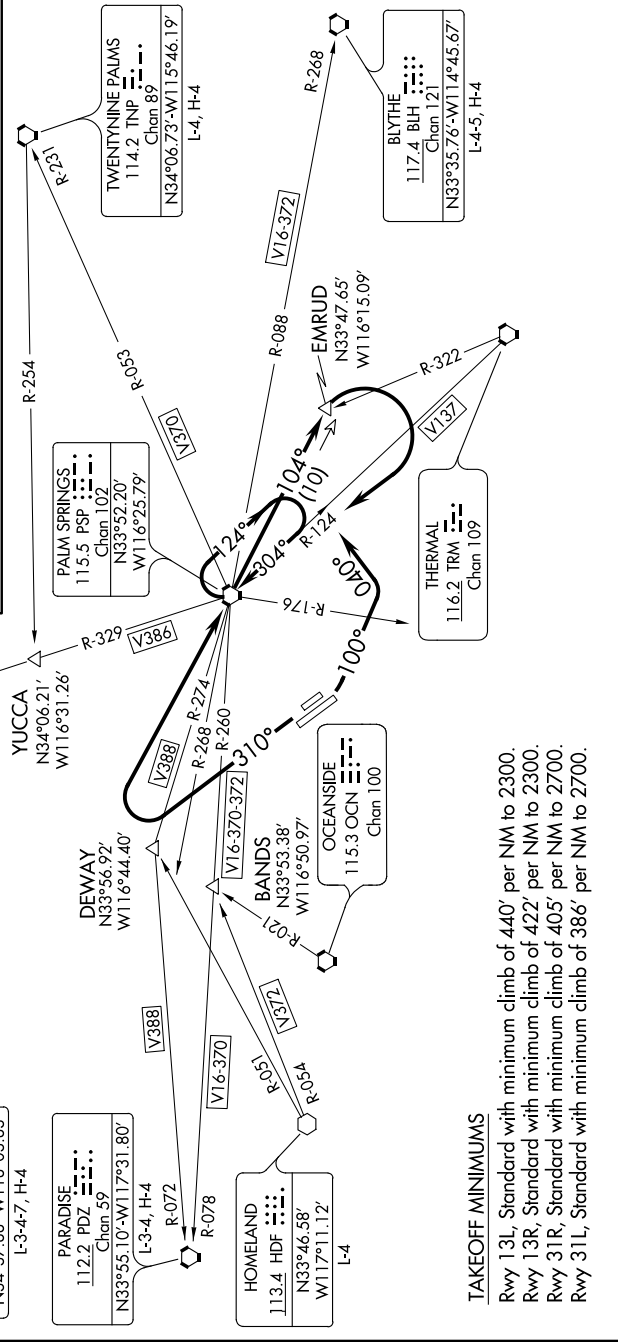
V16-370-372: 11 600 W
V370: 6200 NE
V386: 7600 NW
V388: 6300 W
V137: 11200 NW

DEPARTURE ROUTE DESCRIPTION

TAKEOFF RUNWAYS 13L/R: Climbing left turn heading 100° to cross PSP VORTAC R-176, then turn left heading 040° to intercept PSP R-104, thence

TAKEOFF RUNWAYS 31L/R: Climb heading 310° to cross PSP VORTAC R-268, then turn right direct PSP VORTAC, thence

. . . . climb via PSP R-104 to EMRUD INT/PSP 10 DME, then turn right direct PSP VORTAC. If not at MEA/MCA at PSP VORTAC, climb in PSP VORTAC holding pattern until reaching MEA/MCA for assigned route of flight.



NOTE: Chart not to scale.

CATHEDRAL ONE DEPARTURE

PALM SPRINGS, CALIFORNIA
PALM SPRINGS INTL (PSP)

SW-3, 22 APR 2021 to 20 MAY 2021