

RNAV (RNP) Z RWY 13R

PALM SPRINGS INTL (PSP)

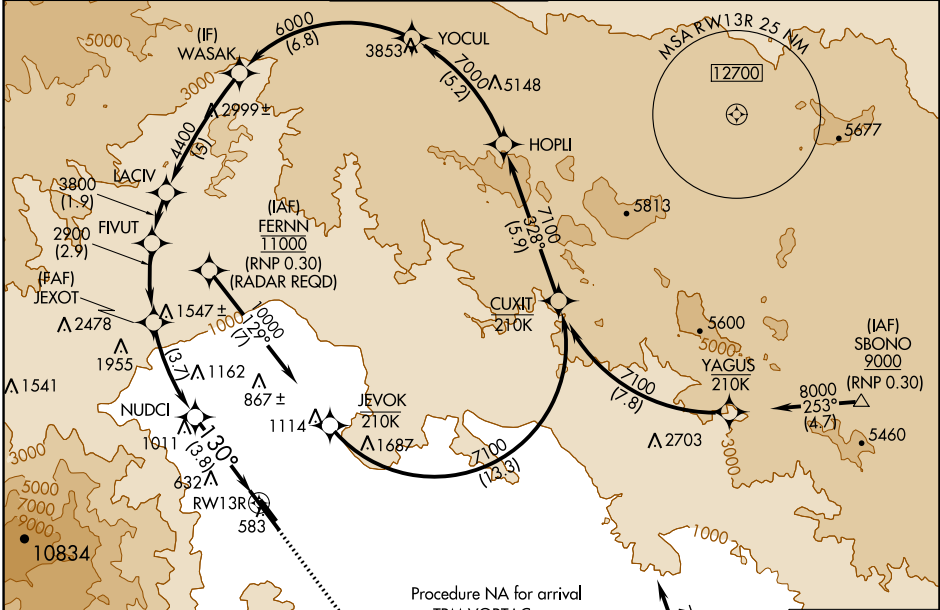
APP CRS	Rwy Idg	6857
130°	TDZE	451
	Apt Elev	476

RNP AR APCH, RF required.

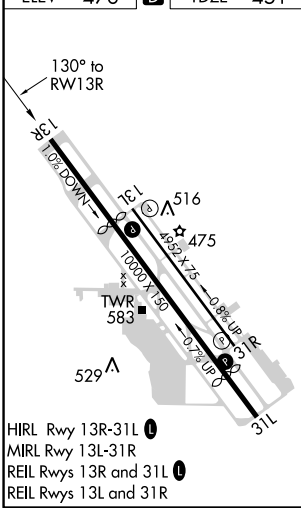
▽ For uncompensated Baro-VNAV systems, procedure NA below 1°C or above 54°C.

MISSED APPROACH: Climb to 900 then climbing left turn to 4000 direct TRM VORTAC and hold.

ATIS	SOCAL APP CON*	PALM SPRINGS TOWER*	GND CON	CLNC DEL	UNICOM
124.65	126.7 370.95 135.275 251.1	119.7 (CTAF) 0 377.05	121.9	128.35	122.95



ELEV 476	D	TDZE 451
----------	----------	----------



HIRL Rwy 13R-31L
MIRL Rwy 13L-31R
REIL Rwy 13R and 31L
REIL Rwy 13L and 31R

Procedure NA for arrival on TRM VORTAC airway radials 263 CW 021.

(IAF) THERMAL TRM 9000 (RNP 0.30)

MISSED APCH FIX

THERMAL TRM 130° 4 NM

WASAK	VGSi and descent angles not coincident (VGSi Angle 3.00/TCH 47).			900	4000	TRM
6000	LACIV	FIVUT	JEXOT	NUDCI	RWY 13R	
	4400	3800	2900	1713		
GP 3.00°				130°		
TCH 45						
	5 NM	1.9 NM	2.9 NM	3.7 NM	3.8 NM	

CATEGORY	A	B	C	D
RNP 0.17 DA		812-1¼	361 (400-1¼)	
RNP 0.30 DA		882-1½	431 (500-1½)	

AUTHORIZATION REQUIRED

SW-3, 22 APR 2021 to 20 MAY 2021

SW-3, 22 APR 2021 to 20 MAY 2021