

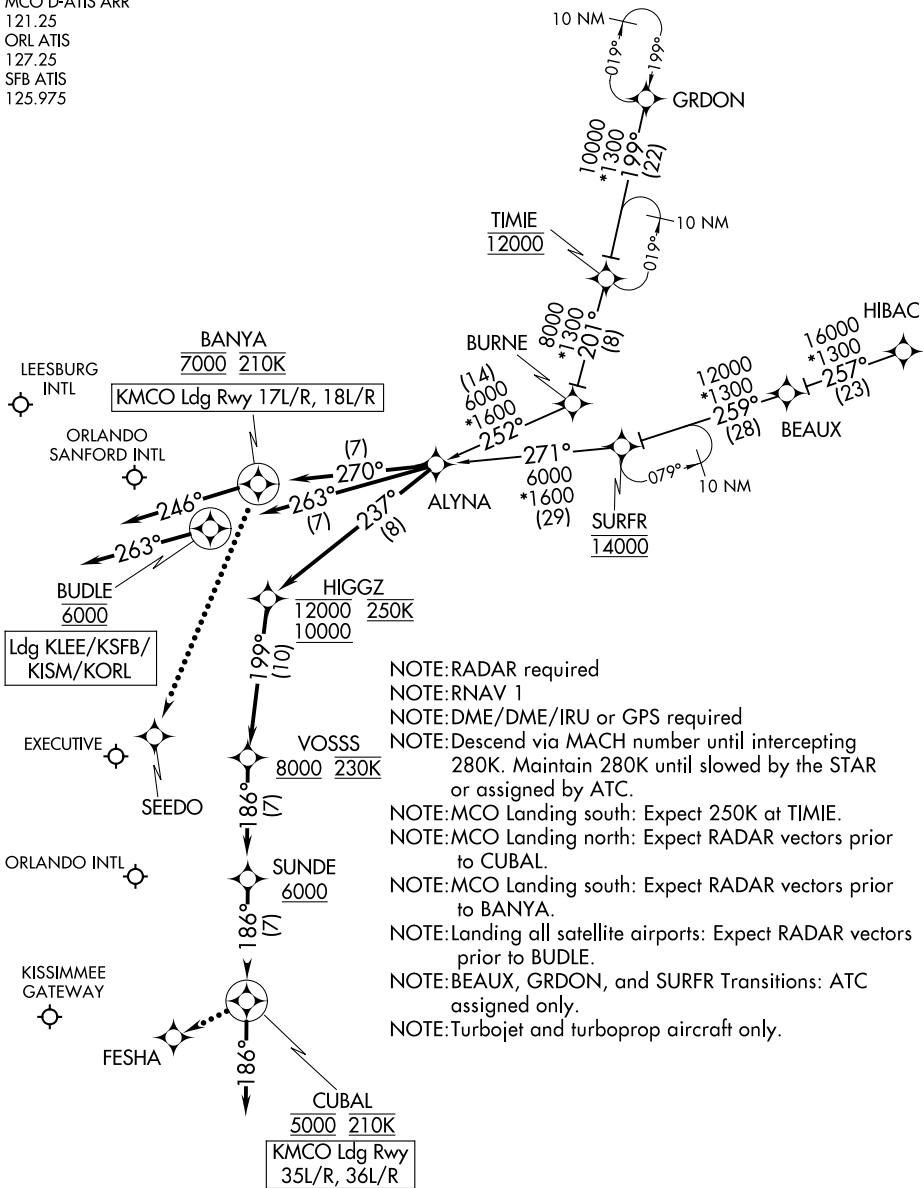
(ALYNA.ALYNA1) 21112

ALYNA ONE ARRIVAL (RNAV)

AL-571 (FAA)

ORLANDO, FLORIDA

ORLANDO APP CON
 124.8 307.0
 ISM ATIS
 128.775
 MCO D-ATIS ARR
 121.25
 ORL ATIS
 127.25
 SFB ATIS
 125.975



NOTE: RADAR required
 NOTE: RNAV 1
 NOTE: DME/DME/IRU or GPS required
 NOTE: Descend via MACH number until intercepting 280K. Maintain 280K until slowed by the STAR or assigned by ATC.
 NOTE: MCO Landing south: Expect 250K at TIME.
 NOTE: MCO Landing north: Expect RADAR vectors prior to CUBAL.
 NOTE: MCO Landing south: Expect RADAR vectors prior to BANYA.
 NOTE: Landing all satellite airports: Expect RADAR vectors prior to BUDLE.
 NOTE: BEAUX, GRDON, and SURFR Transitions: ATC assigned only.
 NOTE: Turbojet and turboprop aircraft only.

(NARRATIVE ON FOLLOWING PAGE)

NOTE: Chart not to scale.

SE-3, 22 APR 2021 to 20 MAY 2021

SE-3, 22 APR 2021 to 20 MAY 2021

ALYNA ONE ARRIVAL (RNAV)

(ALYNA.ALYNA1) 22APR21

ORLANDO, FLORIDA