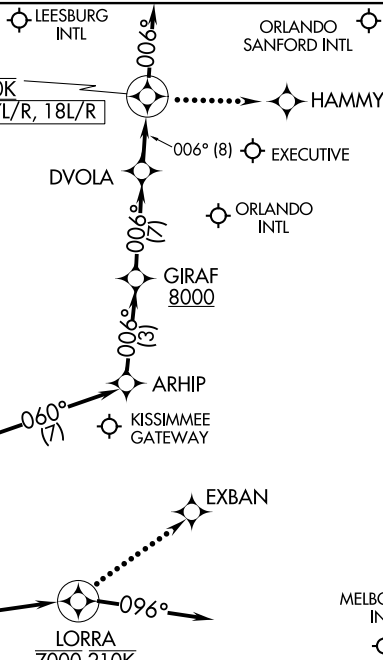


ORLANDO APP CON  
 134.05 339.8  
 ISM ATIS  
 128.775  
 MCO D-ATIS ARR  
 121.25  
 MLB ATIS  
 132.55  
 ORL ATIS  
 127.25  
 SFB ATIS  
 125.975



SE-3, 22 APR 2021 to 20 MAY 2021

SE-3, 22 APR 2021 to 20 MAY 2021

- NOTE:RADAR required.
- NOTE:RNAV 1.
- NOTE:DME/DME/IRU or GPS required.
- NOTE:Descend via MACH number until intercepting 280K. Maintain 280K until slowed by the STAR or assigned by ATC.
- NOTE:Expect "descend via" clearance and landing direction (north or south) by ARTCC. For vertical navigation planning, landing south, select Rwy 18R, landing north, select Rwy 36L.
- NOTE:MCO approach will issue landing runway.
- NOTE:MCO Landing North: expect 250K at MOANS.
- NOTE:MCO Landing North: expect RADAR vectors prior to LORRA.
- NOTE:MCO Landing South: expect RADAR vectors prior to LYENS.
- NOTE:Landing all satellite airports, expect RADAR vectors prior to JOKRS.
- NOTE:COREA and MOANS Transitions, ATC assigned only.
- NOTE:Jet aircraft only.

(NARRATIVE ON FOLLOWING PAGE)

NOTE: Chart not to scale.