

PR1CY ONE ARRIVAL (RNAV) Transition Routes

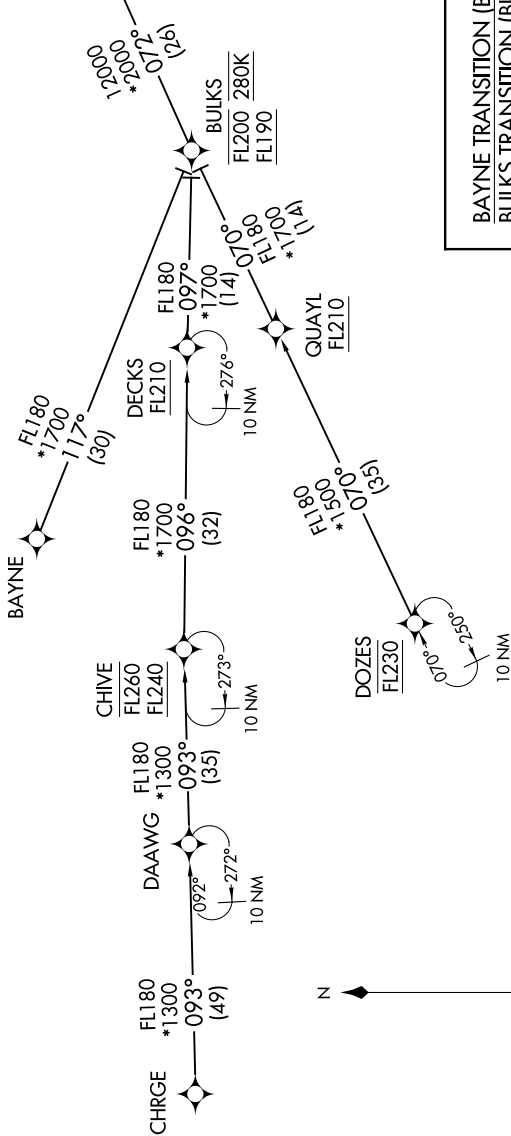
ORLANDO, FLORIDA

SE-3, 22 APR 2021 to 20 MAY 2021

ORLANDO APP CON
 134.05 339.8
 ISM ATIS
 128.775
 MLB ATIS
 132.55
 MCO D-ATIS ARR
 121.25
 ORL ATIS
 127.25
 SFB ATIS
 125.975

- NOTE: RADAR required.
- NOTE: RNAV 1.
- NOTE: DME/DME/IRU or GPS required.
- NOTE: Descend via mach number until intercepting 280K. Maintain 280K until slowed by the STAR or assigned by ATC.
- NOTE: Expect "descend via" clearance and landing direction (north or south) by ARTCC.
- NOTE: For vertical navigation planning, landing south, select Rwy 18R, landing north, select Rwy 36L.
- NOTE: MCO approach will issue landing runway.
- NOTE: BULKS, CHIVE and DOZES TRANSITIONS, ATC assigned only.
- NOTE: GNSS required on CHRG ENROUTE TRANSITION from CHRG to DAAWG.
- NOTE: Jet aircraft only.

See following page
 for Arrival Routes.
 PR1CY
 13000
 10 NM
 75°



BAYNE TRANSITION (BAYNE.PR1CY1)
 BULKS TRANSITION (BULKS.PR1CY1)
 CHIVE TRANSITION (CHIVE.PR1CY1)
 CHRG TRANSITION (CHRG.PR1CY1)
 DOZES TRANSITION (DOZES.PR1CY1)

(CONTINUED ON FOLLOWING PAGE)

NOTE: Chart not to scale.

SE-3, 22 APR 2021 to 20 MAY 2021

ORLANDO, FLORIDA