

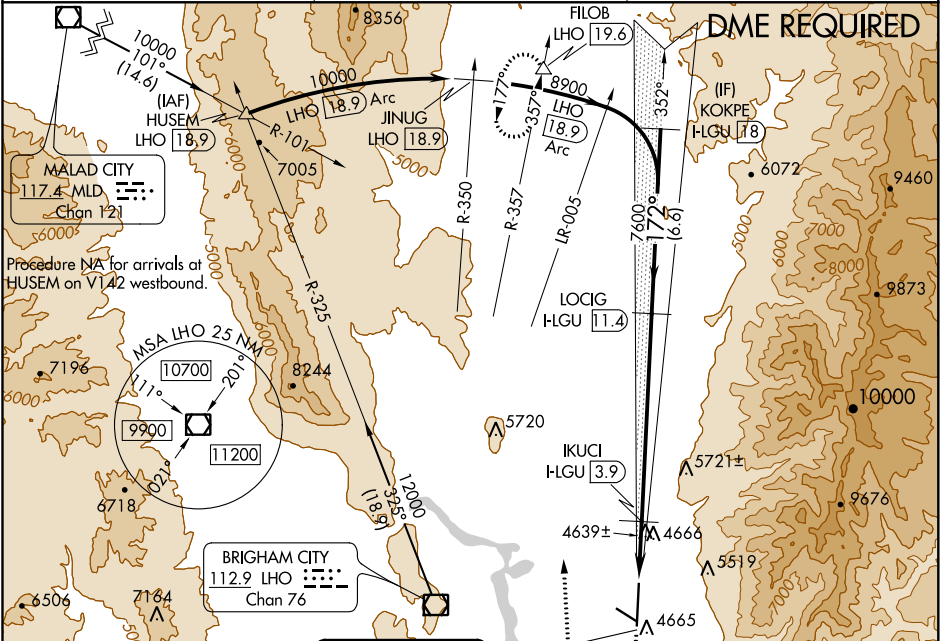
| | | |
|--|------------------------|--|
| LOC/DME HLGU 109.15 Chan 28 (Y) | APP CRS 172° | Rwy Idg 9010 TDZE 4457 Apt Elev 4457 |
|--|------------------------|--|

ILS or LOC/DME RWY 17

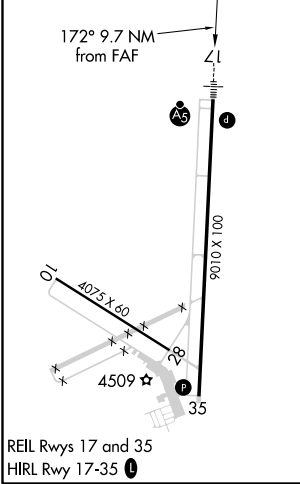
LOGAN-CACHE (LGU)

| | | |
|--|---------------------|--|
| <p>NA Circling NA east of Rwy 17-35 -15°C Night Landing: Rwy 10, 28 NA.</p> | <p>MALSR</p> | <p>MISSED APPROACH: Climb to 5800 then climbing right turn to 12000 on heading 345° and on LHO VOR/DME R-357 to FILOB INT/LHO 19.6 DME and hold, continue climb-in-hold to 12000.</p> |
|--|---------------------|--|

| | | |
|------------------------|--|-------------------------------|
| ASOS 135.275 | SALT LAKE CENTER 127.7 354.125 | UNICOM 122.8 (CTAF) |
|------------------------|--|-------------------------------|



| | | |
|-----------|----------|-----------|
| ELEV 4457 | D | TDZE 4457 |
|-----------|----------|-----------|



LOCALIZER 109.15 HLGU Chan 28 (Y)

Procedure **NA** for arrivals at HUSEM on V142 westbound.

5800 ↑ 12000 hdg R-357 345° FILOB △ Use I-LGU DME when on localizer course.

VGSI and ILS glidepath not coincident (VGSI Angle 3.00/TCH 40).

IKUCI HLGU 3.9

LOCIG HLGU 11.4 KOKPE I-LGU 18

7600 172° 8900

5220* *LOC only

GS 3.00° TCH 50

1.3 NM 1 NM 7.5 NM 6.6 NM

| CATEGORY | A | B | C | D |
|-------------------|------------------------|--------------------|----------------------------|--------------------|
| S-ILS 17 | 4669-1/2 | | 212 (300-1/2) | |
| S-LOC 17 | 4900-1/2 443 (500-1/2) | | 4900-7/8 443 (500-7/8) | |
| C CIRCLING | 4900-1 443 (500-1) | 4940-1 483 (500-1) | 4940-1 1/2 483 (500-1 1/2) | 5060-2 603 (700-2) |

SW-4, 22 APR 2021 to 20 MAY 2021

SW-4, 22 APR 2021 to 20 MAY 2021