


LOC/DME I-GUH <b>111.1</b> Chan <b>48</b>	APP CRS <b>312°</b>	Rwy ldg TDZE Apt Elev <b>5925</b> <b>8</b> <b>10</b>
---	------------------------	---

# ILS or LOC RWY 31

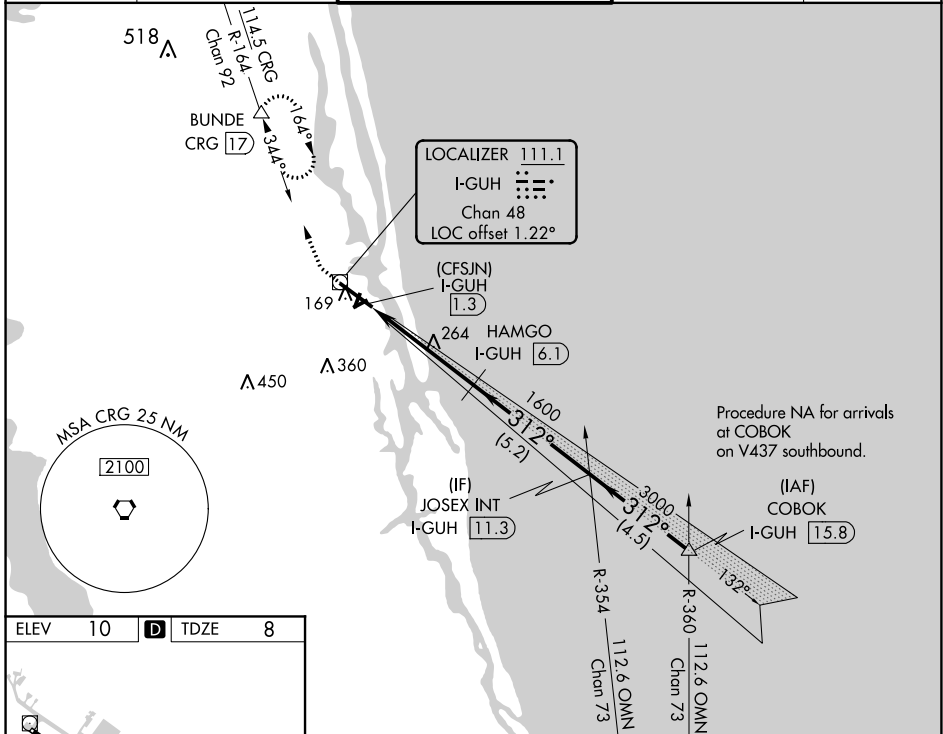
NORTHEAST FLORIDA RGNL (SGJ)

**▼** DME required. Circling Rwy 2, 6, 20, 24 NA at night.  
**▲** For inop ALS, increase S-LOC 31 Cat C/D visibility to 1 $\frac{1}{8}$ .

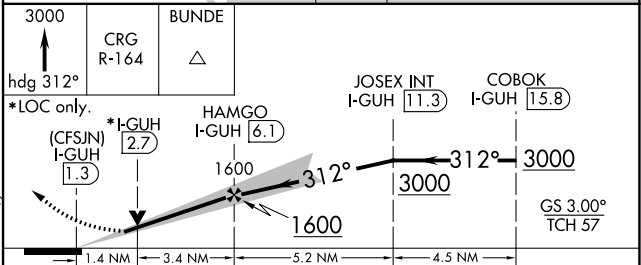
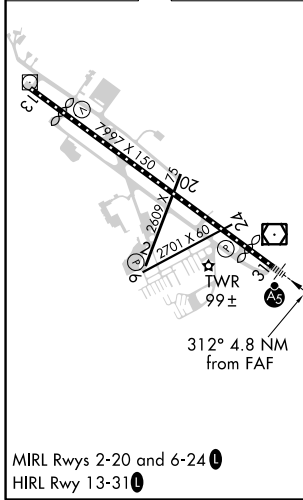
**MALSR** 

**MISSED APPROACH:** Climb to 3000 on heading 312° and on CRG VORTAC R-164 to BUNDE/CRG 17 DME and hold, continue climb-in-hold to 3000.

ATIS <b>119.625</b>	JACKSONVILLE APP CON <b>120.75</b>	ST AUGUSTINE TOWER ★ <b>127.625 (CTAF) 269.475</b>	GND CON <b>121.175 251.125</b>	UNICOM <b>122.95</b>
------------------------	---------------------------------------	---	-----------------------------------	-------------------------



ELEV 10	<b>D</b>	TDZE 8
---------	----------	--------



CATEGORY	A	B	C	D
S-ILS 31	258- $\frac{1}{2}$		250 (300- $\frac{1}{2}$ )	
S-LOC 31	520- $\frac{1}{2}$	512 (600- $\frac{1}{2}$ )	520-1	512 (600-1)
<b>C</b> CIRCLING	520-1 510 (600-1)	580-1 570 (600-1)	660-1 $\frac{3}{4}$ 650 (700-1 $\frac{3}{4}$ )	780-2 $\frac{1}{2}$ 770 (800-2 $\frac{1}{2}$ )