

LOC/DME I-CHO <b>111.7</b> Chan 54	APP CRS <b>030°</b>	Rwy Idg TDZE Apt Elev	<b>6801</b> <b>640</b> <b>640</b>
--	------------------------	-----------------------------	---

# ILS or LOC RWY 3

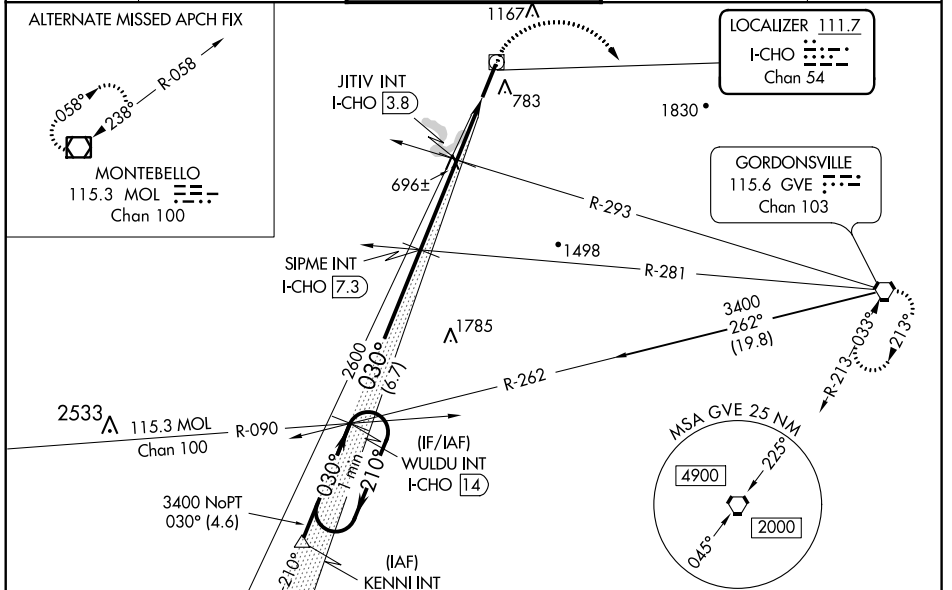
CHARLOTTESVILLE-ALBEMARLE (CHO)

**⚠** When local altimeter setting not received, use Orange altimeter setting and increase S-ILS 3 DA to 912 and all MDA 80 feet; increase S-LOC 3 Cats C/D, Circling Cats C/D, JITIV fix minimums S-LOC 3 Cats C/D, and JITIV fix minimums Circling Cats C/D visibility ¼ mile. VDP NA when using Orange altimeter setting. For inop ALS when using Orange altimeter setting increase S-ILS 3 all Cats visibility to ¾, S-LOC 3 Cats C, D visibility to 2 miles, and S-LOC 3 JITIV fix minimums Cat C, D visibility to 1½ mile.



**MISSED APPROACH:**  
Climb to 2000 then climbing right turn to 4000 direct GVE VORTAC and hold.

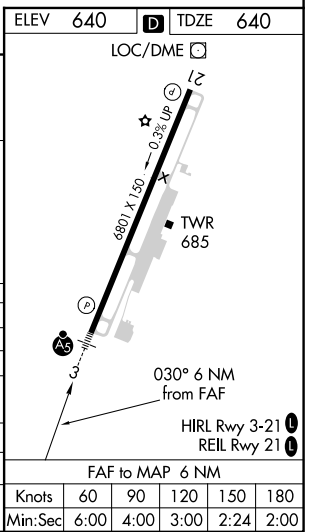
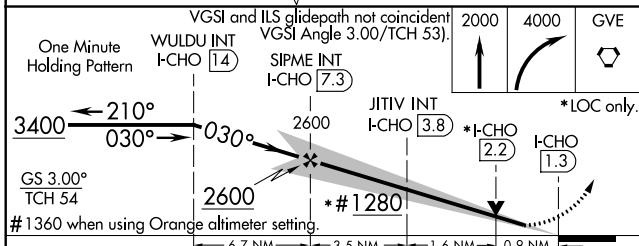
ATIS <b>118.425</b>	POTOMAC APP CON <b>132.85 323.125</b>	CHARLOTTESVILLE TOWER ★ <b>124.5 (CTAF) 338.275</b>	GND CON <b>121.9 338.275</b>	UNICOM <b>122.95</b>
------------------------	--	--	---------------------------------	-------------------------



NE-3, 22 APR 2021 to 20 MAY 2021

NE-3, 22 APR 2021 to 20 MAY 2021

ELEV 640	TDZE 640
----------	----------



CATEGORY	A	B	C	D
S-ILS 3	840-½ 200 (200-½)			
S-LOC 3	1280-½	640 (700-½)	1280-1⅓	640 (700-1⅓)
<b>C</b> CIRCLING	1280-1	640 (700-1)	1500-2½	1500-2¾
JITIV FIX MINIMUMS (DUAL VOR RECEIVERS OR DME REQUIRED)				
S-LOC 3	980-½	340 (400-½)	980-⅝	340 (400-⅝)
<b>C</b> CIRCLING	1100-1	460 (500-1)	1500-2½	1500-2¾

Knots	60	90	120	150	180
Min:Sec	6:00	4:00	3:00	2:24	2:00