

LOC/DME I-LCI 108.5 Chan 22	APP CRS 084°	Rwy Idg TDZE Apt Elev	5646 545 545
--	------------------------	-----------------------------	---

ILS or LOC RWY 8

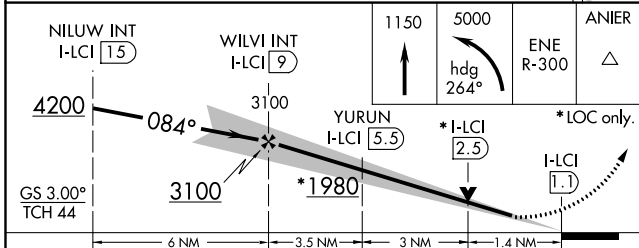
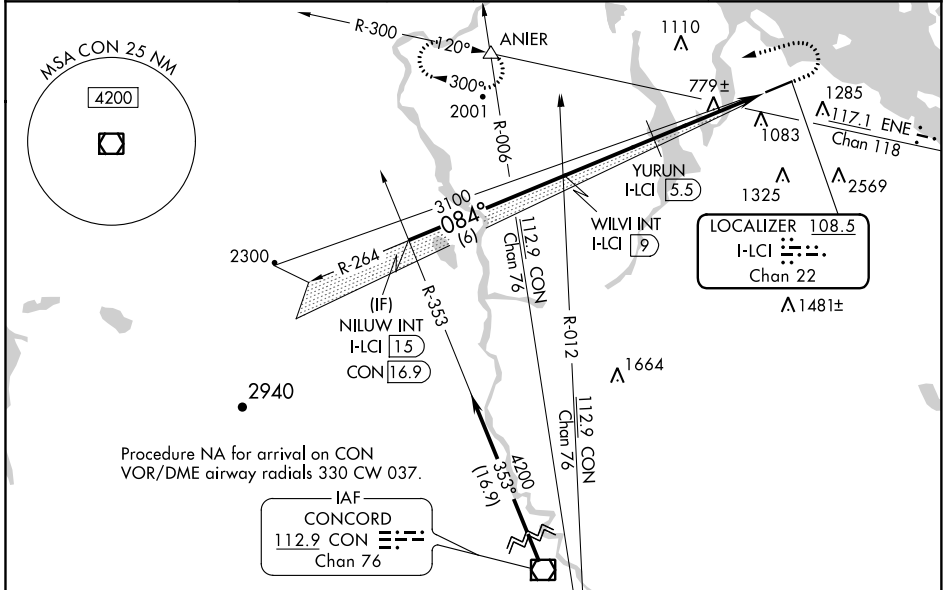
LACONIA MUNI (LCI)

⚠ Circling NA south of Rwy 8-26. Circling Rwy 26 NA at night. Rwy 8 helicopter visibility reduction below 3/4 SM NA. For inop ALS, increase YURUN fix minimums S-LOC 8 visibility Cats A/B to 1 SM and Cats C/D to 1 3/8 SM.

MALSR

MISSED APPROACH: Climb to 1150 then climbing left turn to 5000 on heading 264° and ENE VOR/DME R-300 to ANIER INT and hold, continue climb-in-hold to 5000. **Missed approach requires minimum climb of 295 feet per NM to 1500.

AWOS-3PT 133.525	BOSTON APP CON 134.75 254.25	CLNC DEL 119.85	UNICOM 123.0 (CTAF) 0
----------------------------	--	---------------------------	---------------------------------



ELEV 545	D	TDZE 545			
REIL Rwy 26 0					
HIRL Rwy 8-26 0					
FAF to MAP 7.9 NM					
Knots	60	90	120	150	180
Min:Sec	7:54	5:16	3:57	3:10	2:38

CATEGORY	A	B	C	D
S-ILS 8 **		795-3/4	250 (300-3/4)	
S-ILS 8		902-3/4	357 (400-3/4)	
S-LOC 8	1980-3/4 1435 (1500-3/4)	1980-1 1435 (1500-1)	1980-3	1435 (1500-3)
C CIRCLING	1980-1 1/4 1435 (1500-1 1/4)	1980-1 1/2 1435 (1500-1 1/2)	1980-3	1435 (1500-3)
YURUN FIX MINIMUMS				
S-LOC 8	1040-3/4	495 (500-3/4)	1040-1	495 (500-1)
C CIRCLING	1160-1	615 (700-1)	1160-1 3/4 615 (700-1 3/4)	1460-3 915 (1000-3)

NE-1, 22 APR 2021 to 20 MAY 2021

NE-1, 22 APR 2021 to 20 MAY 2021