

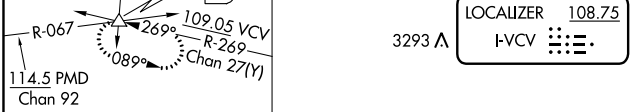
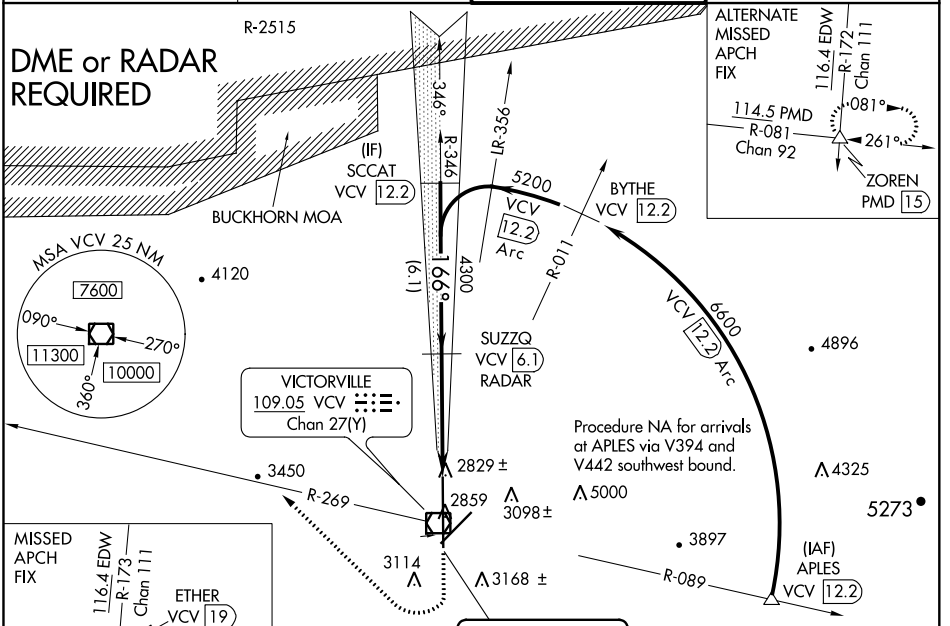
LOC I-VCV <b>108.75</b>	APP CRS <b>166°</b>	Rwy Idg 15050 TDZE 2825 Apt Elev 2885
----------------------------	------------------------	--

**ILS or LOC RWY 17**  
SOUTHERN CALIFORNIA LOGISTICS (VCV)

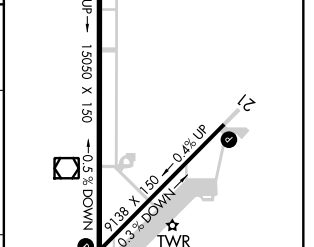
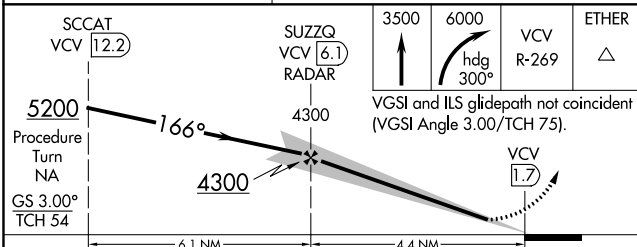
**⚠** When local altimeter setting not received, use Edwards AFB altimeter setting and increase all DA and MDA 160 feet. Increase all visibilities 1/2 mile.  
**⚠** DME from VCV VOR/DME. Simultaneous reception of I-VCV and VCV DME required.

MISSED APPROACH: Climb to 3500, then climbing right turn to 6000 via heading 300° and VCV VOR/DME R-269 to ETHER INT and hold.

ATIS * <b>135.475</b>	JOSHUA APP CON <b>124.55 363.0</b>	VICTORVILLE TOWER * <b>118.35(CTAF) 282.225</b>	GND CON <b>124.45</b>
--------------------------	---------------------------------------	--	--------------------------



ELEV <b>2885</b>	<b>D</b> TDZE <b>2825</b>
------------------	---------------------------



CATEGORY	A	B	C	D
S-ILS 17		3025/40	200 (200-34)	
S-LOC 17		3080/50	255 (200-1)	
CIRCLING	3360-1 475 (500-1)	3420-1 535 (600-1)	3420-1½ 535 (600-1½)	3580-2¼ 695 (700-2¼)

FAF to MAP 4.4 NM					
Knots	60	90	120	150	180
Min:Sec	4:24	2:56	2:12	1:46	1:28

SW-3, 22 APR 2021 to 20 MAY 2021

SW-3, 22 APR 2021 to 20 MAY 2021