

LOC I-EN	APP CRS	Rwy Idg	6201
108.9	018°	TDZE	488
		Apt Elev	488

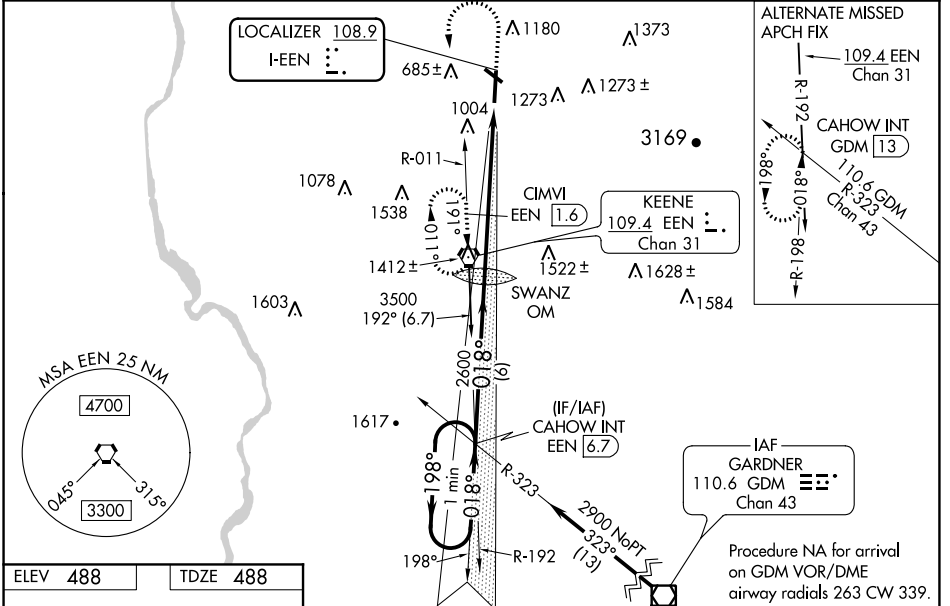
ILS or LOC RWY 2

DILLANT-HOPKINS (EEN)

When local altimeter setting not received, use Orange altimeter setting; increase S-ILS 2 DA to 914 and all MDAs 60 feet; increase CIMVI fix minimums visibility S-LOC Cats C and D 1/4 SM. For inoperative ALS when using Orange altimeter setting, increase S-ILS all Cats visibility to 1 1/2 SM and increase S-LOC Cat B visibility to 1 1/2 SM. Inoperative table does not apply to S-LOC Cat A. For inoperative ALS, increase S-LOC Cat B visibility to 1 1/2 SM. CIMVI FIX minimums inoperative table does not apply to S-LOC Cat A. For inoperative ALS, increase S-LOC Cat B visibility to 1 1/4 SM. CIMVI FIX minimums for inoperative ALS when using Orange altimeter setting, increase S-LOC Cat B visibility to 1 1/4 SM. Rwy 2 helicopter visibility reduction below 3/4 SM NA. Circling Rwy 20, 32 NA at night.

MALS
 MISSED APPROACH: Climb to 1600 then climbing left turn to 3000 direct EEN VORTAC and hold.

AWOS-3PT 119.025	BOSTON CENTER 123.75 338.2	UNICOM 123.0 (CTAF) 1
----------------------------	--------------------------------------	---------------------------------

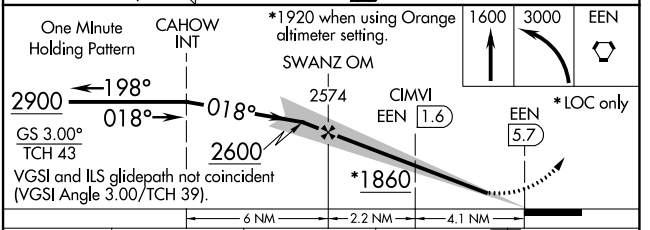


ELEV 488	TDZE 488
-----------------	-----------------

REIL Rws 14 and 32
 HIRL Rwy 2-20
 MIRL Rwy 14-32

FAF to MAP 6.3 NM

Knots	60	90	120	150	180
Min:Sec	6:18	4:12	3:09	2:31	2:06



CATEGORY	A	B	C	D
S-ILS 2	859-1 371 (400-1)			
S-LOC 2	1860-1 1/4	1372 (1400-1 1/4)	1860-2 1/2	1372 (1400-2 1/2)
CIRCLING	1860-1 1/4 1372 (1400-1 1/4)	1860-1 1/2 1372 (1400-1 1/2)	1860-3	1372 (1400-3)
CIMVI FIX MINIMUMS				
S-LOC 2	1260-1	772 (800-1)	1260-1 3/4 772 (800-1 1/4)	1260-2 772 (800-2)
CIRCLING	1380-1 1/4 892 (900-1 1/4)	1500-1 1/2 1012 (1100-1 1/2)	1500-3 1012 (1100-3)	1680-3 1192 (1200-3)

NE-1, 22 APR 2021 to 20 MAY 2021

NE-1, 22 APR 2021 to 20 MAY 2021