

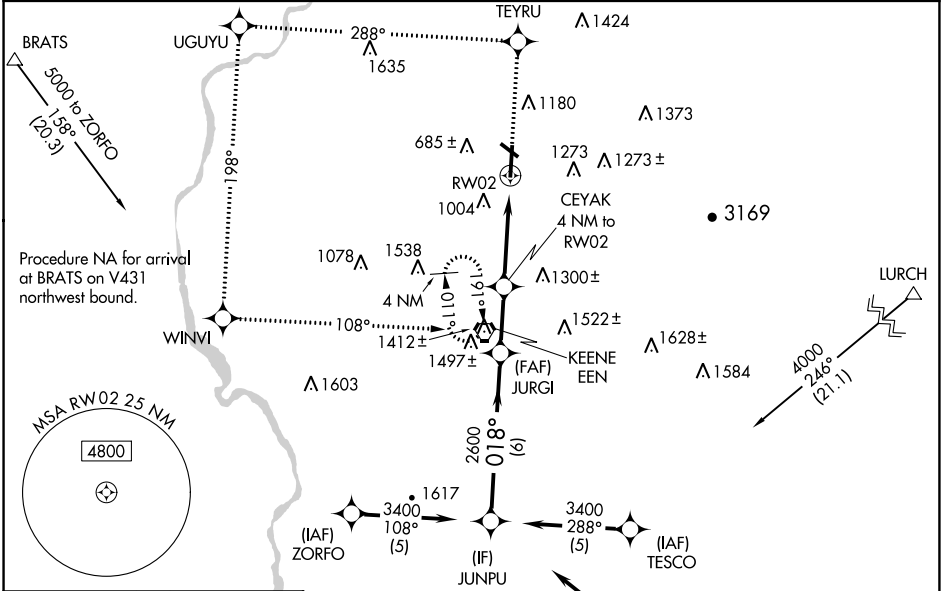
WAAS CH 65708 W02A	APP CRS 018°	Rwy Idg TDZE 488 Apt Elev 488	6201
--	------------------------	---	-------------

RNAV (GPS) RWY 2

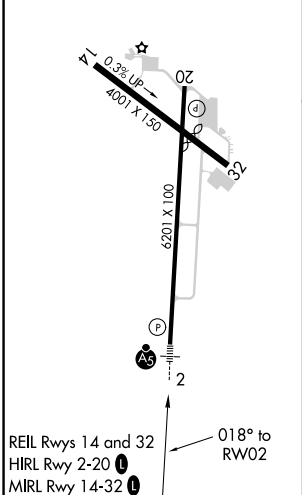
DILLANT-HOPKINS (EEN)

RNP APCH.	<p>When local altimeter setting not received, use Orange altimeter setting; increase LPV DA to 939; increase all MDAs 60 feet and visibility LNAV Cat C ¼ SM. For inoperative ALS, increase LPV visibility all Cats to 1½ SM and LNAV Cats A and B visibilities to 1¼ -20°C SM. For inoperative ALS when using Orange altimeter setting, increase LPV visibility all Cats to 1½ SM and LNAV Cat A visibility to 1¼ SM. Circling Rwy 20, 32 NA at night. Rwy 2 helicopter visibility reduction below ¾ SM NA.</p>	MALSR A5	MISSED APPROACH: Climb to 3000 direct TEYRU and on 288° track to UGUYU and on 198° track to WINVI and on 108° track to EEN VORTAC and hold.
-----------	--	-------------	--

AWOS-3PT 119.025	BOSTON CENTER 123.75 338.2	UNICOM 123.0 (CTAF) 0
----------------------------	--------------------------------------	---------------------------------



ELEV 488	TDZE 488
-----------------	-----------------



Procedure NA for arrival on GDM VOR/DME airway radials 263 CW 339.

Procedure Turn NA	↑	TEYRU 288° track	UGUYU 198° track	WINVI 108° track	EEN
JUNPU	JURGI	VGSI and RNAV glidepath not coincident (VGSI Angle 3.00/TCH 39).			
GP 3.00° TCH 43	3400 018°	2600	*1820	RWY 2	* LNAV only
	6 NM	2.4 NM	4 NM		
CATEGORY	A	B	C	D	
LPV DA	884-1				396 (400-1)
LNAV MDA	1380-1 892 (900-1)		1380-2 ½ 892 (900-2 ¼)		1380-2 ½ 892 (900-2 ½)
CIRCLING	1380-1 ¼ 892 (900-1 ¼)	1480-1 ½ 992 (1000-1 ½)	1480-3 992 (1000-3)	1640-3 1152 (1200-3)	

NE-1, 22 APR 2021 to 20 MAY 2021

NE-1, 22 APR 2021 to 20 MAY 2021