

LOC I-TWF 108.3	APP CRS 258°	Rwy Idg 8703 TDZE 4154 Apt Elev 4154
---------------------------	------------------------	-----------------------------------------------------------------

ILS or LOC RWY 26
JOSLIN FLD-MAGIC VALLEY RGNL (TWF')

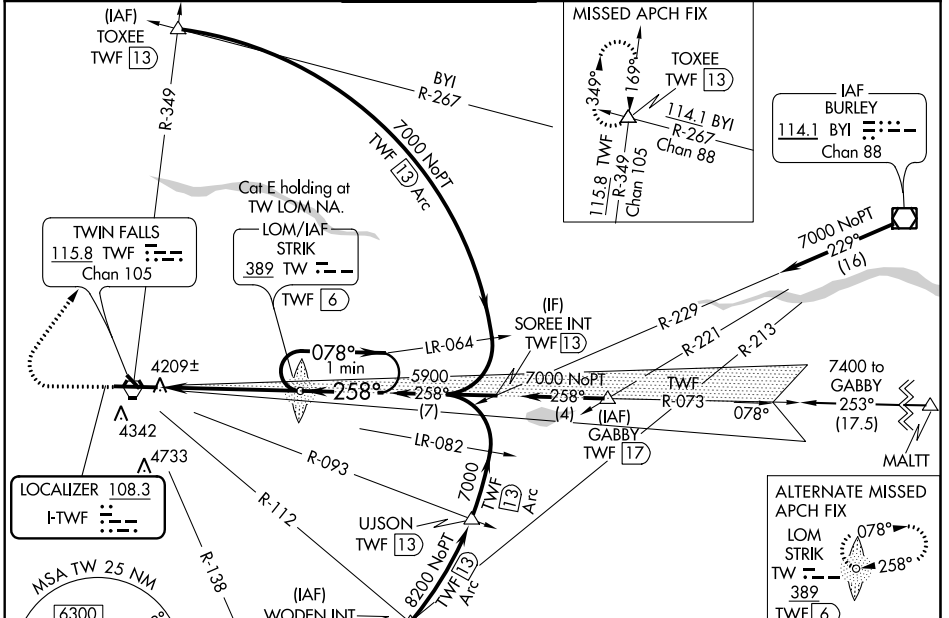
Night landing: Rwy 30 NA. When local altimeter setting not received, use Jerome altimeter setting and increase all DA 49 feet, and all MDA 60 feet, increase S-LOC 26 Cat C-E visibility 1/8 mile. For inoperative MALSR when using local or Jerome altimeter setting, increase S-ILS 26 Cat E visibility 1/4 mile and S-LOC 26 Cat E visibility 1/2 mile. ADF or DME required.

MALSR



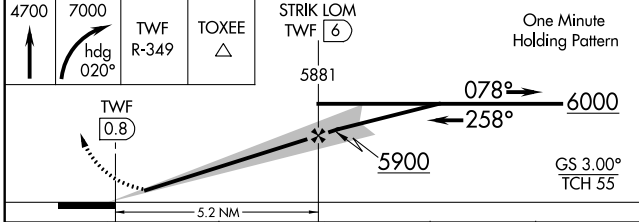
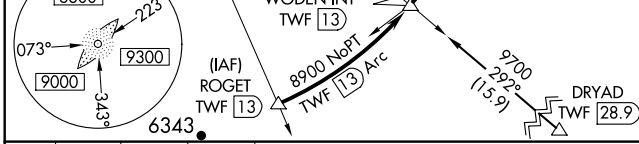
MISSED APPROACH: Climb to 4700 then climbing right turn to 7000 on heading 020° and TWF VORTAC R-349 to TOXEE INT/TWF 13 DME and hold.

ASOS 135.025	TWIN FALLS APP CON* 126.7 353.75	TWIN FALLS TOWER* 118.2 (CTAF) 0 317.5	GND CON 121.7	CLNC DEL 123.65	UNICOM 122.95
------------------------	--------------------------------------------	--------------------------------------------------	-------------------------	---------------------------	-------------------------



NW-1, 22 APR 2021 to 20 MAY 2021

NW-1, 22 APR 2021 to 20 MAY 2021



ELEV 4154	TDZE 4154
REIL Rwy 8	HIRL Rwy 8-26
FAF to MAP 5.2 NM	
Knots	60 90 120 150 180
Min:Sec	5:12 3:28 2:36 2:05 1:44

