

VORTAC TWF 115.8 Chan 105	APP CRS 248°	Rwy Idg TDZE Apt Elev	8703 4154 4154
---	------------------------	-----------------------------	---

VOR RWY 26

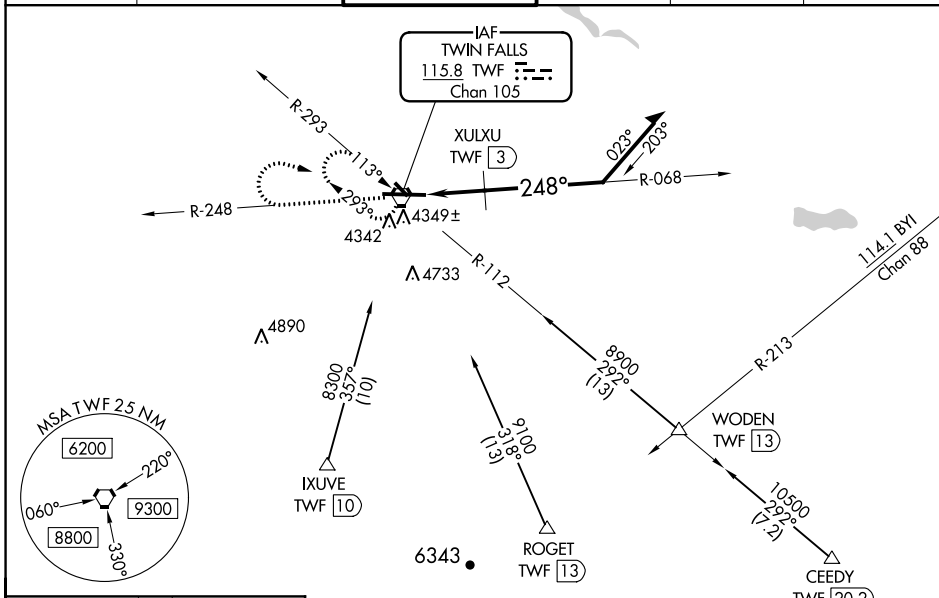
JOSLIN FLD-MAGIC VALLEY RGNL (TWF)

⚠ Night landing: Rwy 30 NA. VDP NA with Jerome altimeter setting. When local altimeter setting not received, use Jerome altimeter setting and increase all MDA 60 feet; increase S-26 Cat A visibility 1/4 mile, Cat C/D 1/8 mile, Circling Cat C 1/4 mile, and XULXU FIX S-26 Cat C/D 1/8 mile. For inop MALSR, increase S-26 Cat C/D visibility to 2 1/2 miles; when using Jerome altimeter setting increase XULXU FIX S-26 Cat C/D visibility to 1 3/8 mile.



MISSED APPROACH: Climb to 6000 on TWF VORTAC R-248 then right turn direct TWF VORTAC and hold.

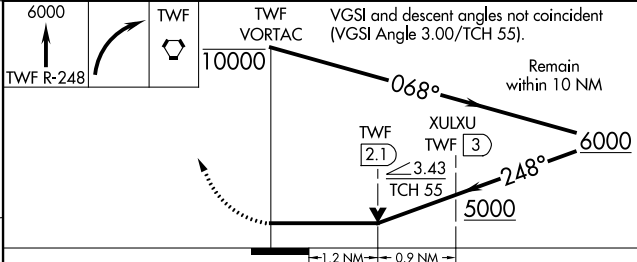
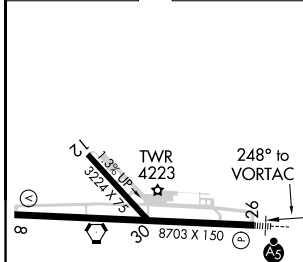
ASOS 135.025	TWIN FALLS APP CON* 126.7 353.75	TWIN FALLS TOWER* 118.2 (CTAF) 0 317.5	GND CON 121.7	CLNC DEL 123.65	UNICOM 122.95
------------------------	--	--	-------------------------	---------------------------	-------------------------



NW-1, 22 APR 2021 to 20 MAY 2021

NW-1, 22 APR 2021 to 20 MAY 2021

ELEV 4154	TDZE 4154
-----------	-----------



CATEGORY	A	B	C	D
S-26	5000-1/2 846 (900-1/2)	5000-3/4 846 (900-3/4)	5000-17/8	846 (900-17/8)
C CIRCLING	5000-1 1/4	846 (900-1 1/4)	5100-2 3/4 946 (1000-2 3/4)	5100-3 946 (1000-3)
XULXU FIX MINIMUMS				
S-26	4600-1/2	446 (500-1/2)	4600-7/8	446 (500-7/8)
C CIRCLING	4700-1 546 (600-1)	4780-1 626 (700-1)	5100-2 3/4 946 (1000-2 3/4)	5100-3 946 (1000-3)

REIL Rwy 8 **1**
HIRL Rwy 8-26 **1**