

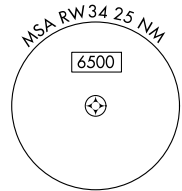
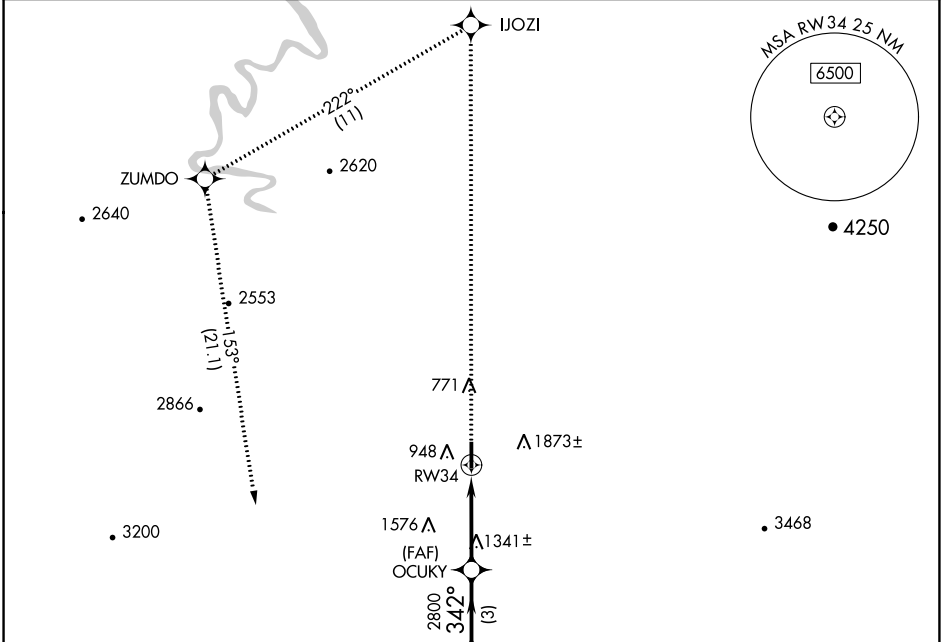
APP CRS 342°	Rwy Idg TDZE Apt Elev	N/A N/A 534
------------------------	-----------------------------	--------------------------

RNAV (GPS)-B

ROSEBURG RGNL (R.B.G)

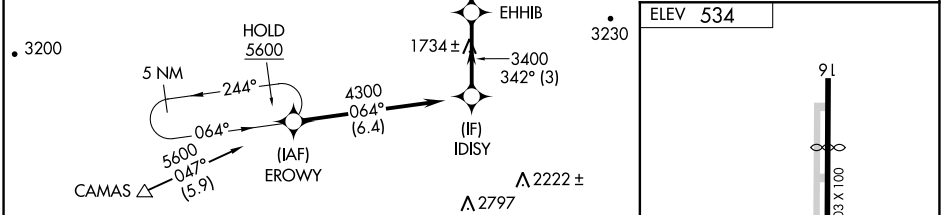
RNP APCH.	MISSED APPROACH: Climb to 5600 direct IJOZI and left turn on track 222° to ZUMDO and left turn on track 153° to EROWY and hold.
▼ Rwy 16, 34 helicopter visibility reduction below 1 SM NA.	
▲ Procedure NA at night. Circling NA east of Rwy 16-34.	

ASOS 135.475	SEATTLE CENTER 127.55 239.0	UNICOM 122.8 (CTAF)
------------------------	---------------------------------------	-------------------------------

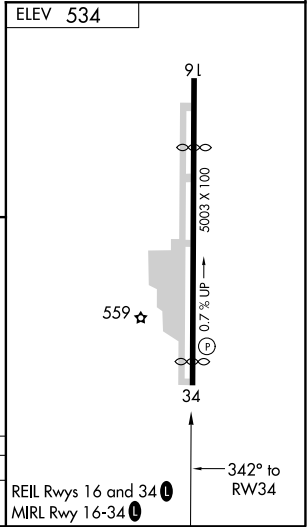
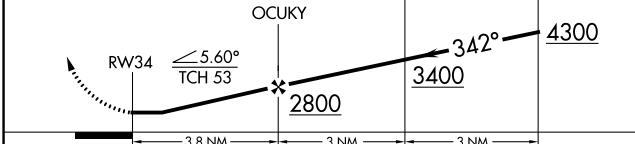


NW-1, 22 APR 2021 to 20 MAY 2021

NW-1, 22 APR 2021 to 20 MAY 2021



5600	IJOZI	ZUMDO	EROWY	VGSI and descent angles not coincident (VGSI Angle 4.00/ TCH 53).
↑	✦	✦	✦	
	tr 222°	tr 153°		



CATEGORY	A	B	C	D	REIL Rwys 16 and 34	MIRL Rwy 16-34
CIRCLING	1700-1¼ 1166 (1200-1¼)	1700-1½ 1166 (1200-1½)	2020-3 1486 (1500-3)	2100-3 1566 (1600-3)	⓪	⓪