


LOC I-VLD <b>110.9</b>	APP CRS <b>356°</b>	Rwy Idg <b>8002</b> TDZE <b>200</b> Apt Elev <b>203</b>
---------------------------	------------------------	---

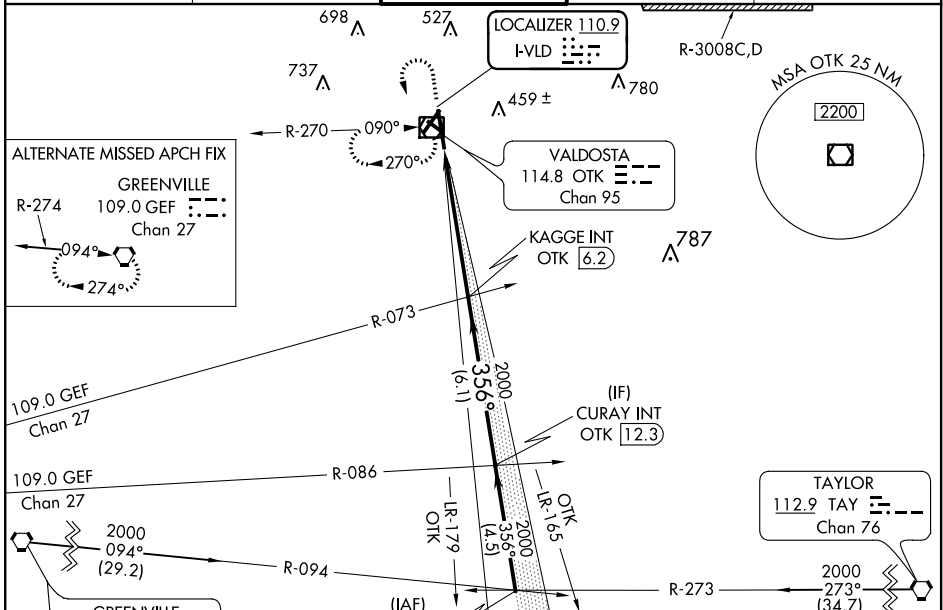
# ILS or LOC RWY 35

VALDOSTA RGNL (VLD)

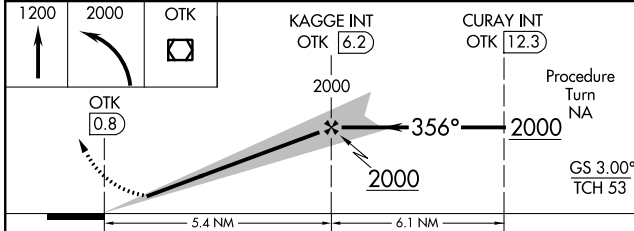
For inoperative MALS, increase S-ILS 35 all Cats visibility to 1 mile and S-LOC 35 Cats A, B visibility to 1 mile, Cat E visibility to 1/2 mile. Visibility reduction by helicopters NA. When local altimeter setting not received, use Moultrie altimeter setting and increase all DA 88 feet and all MDA 100 feet and increase S-LOC 35 Cats C and D visibility 1/4 mile and Cat E visibility 1/2 mile. DME from OTK VOR/DME. For inoperative MALS, when using Moultrie altimeter setting, increase S-ILS 35 Cat E visibility to 1/4 mile and increase S-LOC 35 Cats A and B visibility to 1 mile, Cat E to 2 miles. Circling to Rwy 4, 13, and 31 NA at night.

**MALS**  
  
**MISSED APPROACH:**  
 Climb to 1200 then climbing left turn to 2000 direct OTK VOR/DME and hold, continue climb-in-hold to 2000.

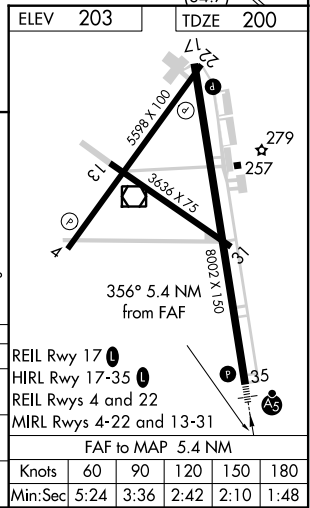
ASOS <b>126.225</b>	VALDOSTA APP CON * <b>126.6 285.6</b>	VALDOSTA TOWER * <b>120.9 (CTAF) 0</b>	GND CON <b>121.7</b>	UNICOM <b>122.95</b>
------------------------	--	---	-------------------------	-------------------------



ELEV 203	TDZE 200
----------	----------



CATEGORY	A	B	C	D	E
S-ILS 35	489-3/4 289 (300-3/4)				
S-LOC 35	660-3/4 460 (500-3/4)		660-1 460 (500-1)		
CIRCLING	660-1 457 (500-1)	660-1 1/2 457 (500-1/2)	780-2 577 (600-2)	1040-3 837 (900-3)	



SE-4, 22 APR 2021 to 20 MAY 2021

SE-4, 22 APR 2021 to 20 MAY 2021