

APP CRS	Rwy Idg	<b>5598</b>
<b>041°</b>	TDZE	<b>202</b>
	Apt Elev	<b>203</b>

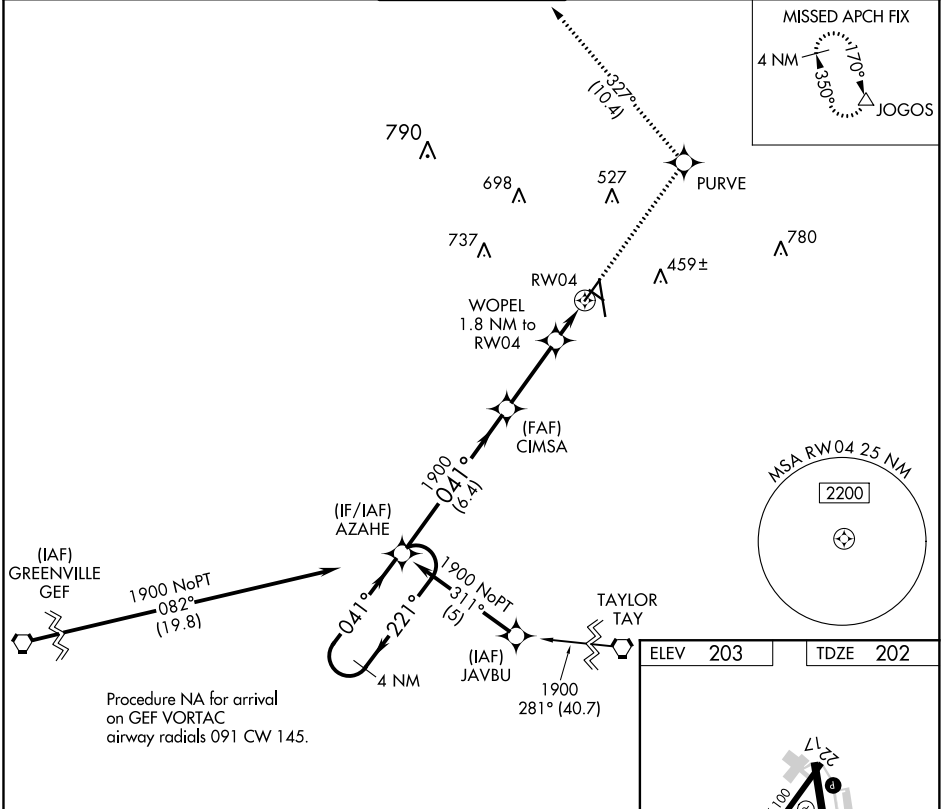
# RNAV (GPS) RWY 4

VALDOSTA RGNL (VLD)

**⚠** Rwy 4 helicopter visibility reduction below 1 SM NA. DME/DME RNP-0.3 NA. When local altimeter setting not received, use Moultrie altimeter setting and increase all MDA 100 feet and LNAV Cat C and D visibility  $\frac{3}{8}$  SM, Circling Cat D  $\frac{1}{4}$  SM. Straight-in Rwy 4 NA at night, Circling Rwy 4, 13, 31 NA at night.

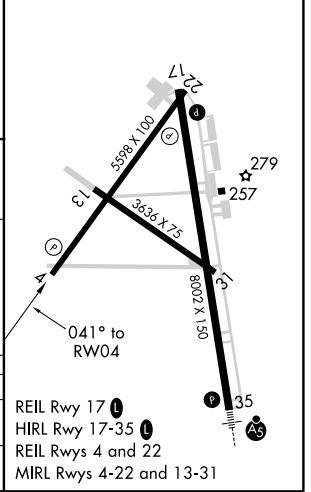
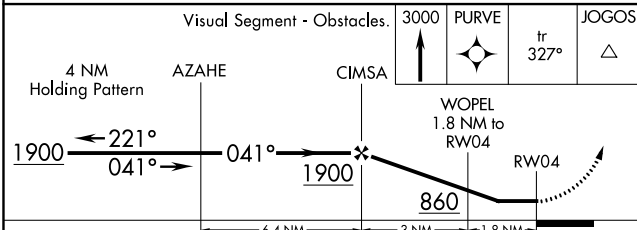
**MISSED APPROACH:** Climb to 3000 direct PURVE and on track 327° to JOGOS and hold.

ASOS <b>126.225</b>	VALDOSTA APP CON * <b>126.6 285.6</b>	VALDOSTA TOWER * <b>120.9 (CTAF)</b>	GND CON <b>121.7</b>	UNICOM <b>122.95</b>
------------------------	--	---	-------------------------	-------------------------



Procedure NA for arrival on GEF VORTAC airway radials 091 CW 145.

ELEV	203	TDZE	202
------	-----	------	-----



CATEGORY	A	B	C	D
LNAV MDA	560-1 358 (400-1)			
CIRCLING	640-1 437 (500-1)	660-1 457 (500-1)	660-1½ 457 (500-1½)	780-2 577 (600-2)

REIL Rwy 17  
HIRL Rwy 17-35  
REIL Rws 4 and 22  
MIRL Rws 4-22 and 13-31

SE-4, 22 APR 2021 to 20 MAY 2021

SE-4, 22 APR 2021 to 20 MAY 2021