

VOR/DME OTK 114.8 Chan 95	APP CRS 190°	Rwy Idg 8002 TDZE 199 Apt Elev 203
---	------------------------	---

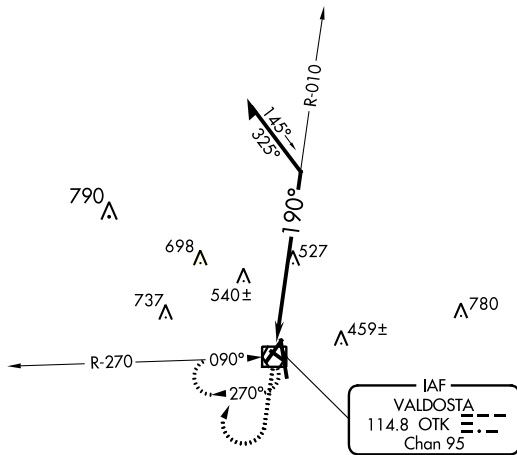
VOR RWY 17

VALDOSTA RGNL (VLD)

⚠ Rwy 17 helicopter visibility reduction below ¼ SM NA. VDP NA when using Moultrie altimeter setting. When local altimeter setting not received, use Moultrie altimeter setting and increase all MDAs 100 feet and increase S-17 Cats B/C visibility and Circling Cats B/C/D visibility ¼ SM. Circling Rwy 4, 13, 31 NA at night.

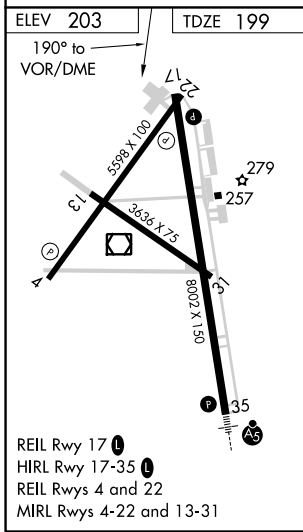
MISSED APPROACH: Climb to 1500 then climbing right turn to 2000 direct OTK VOR/DME and hold, continue climb-in-hold to 2000.

ASOS 126.225	VALDOSTA APP CON * 126.6 285.6	VALDOSTA TOWER * 120.9 (CTAF) 0	GND CON 121.7	UNICOM 122.95
------------------------	--	---	-------------------------	-------------------------

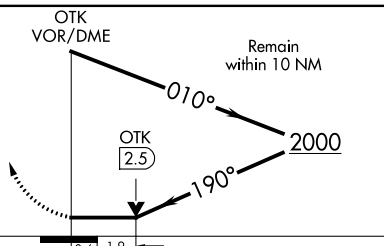
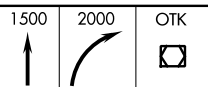


SE-4, 22 APR 2021 to 20 MAY 2021

SE-4, 22 APR 2021 to 20 MAY 2021



REIL Rwy 17 **0**
HIRL Rwy 17-35 **0**
REIL Rws 4 and 22
MIRL Rws 4-22 and 13-31



CATEGORY	A	B	C	D
S-17	840-1 641 (700-1)		840-1¾ 641 (700-1¾)	840-2 641 (700-2)
CIRCLING	840-1 637 (700-1)		840-1¾ 637 (700-1¾)	840-2 637 (700-2)