

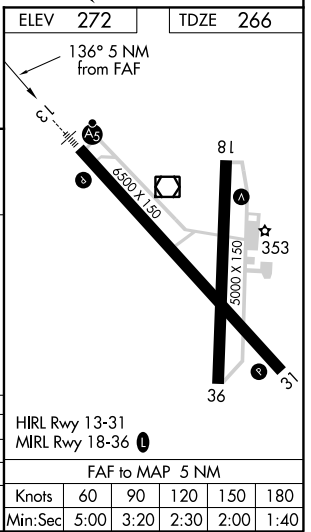
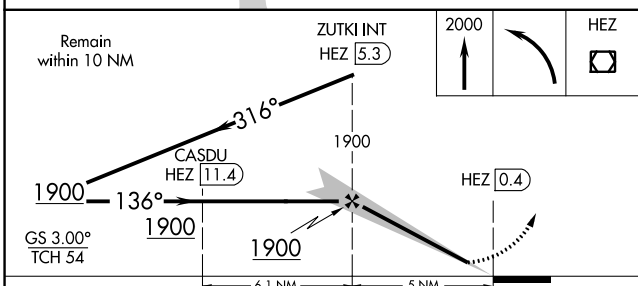
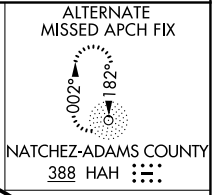
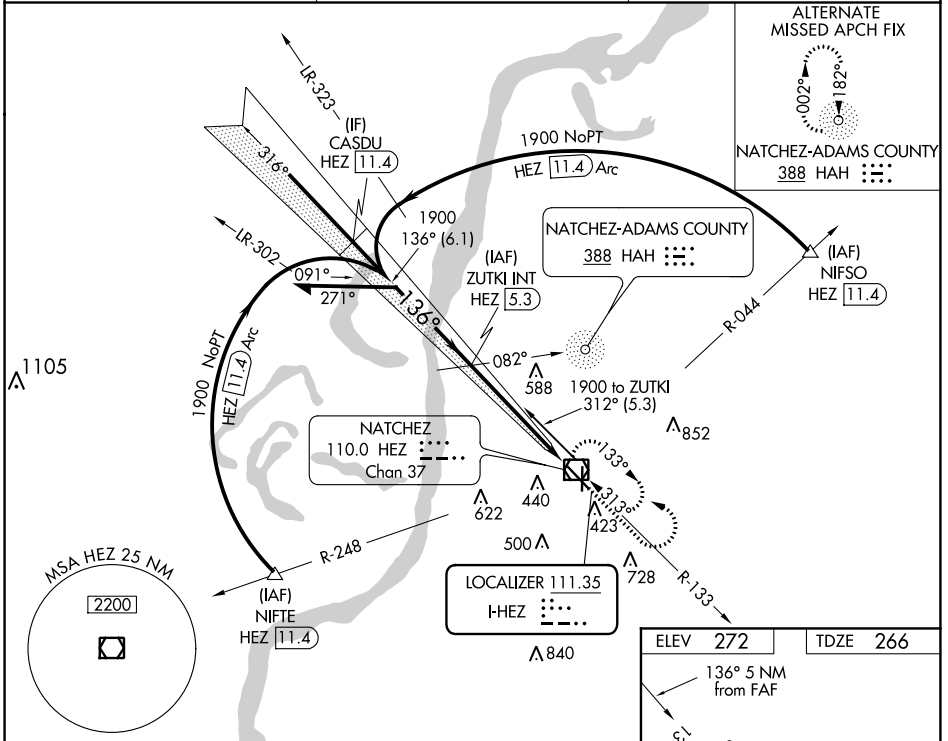
LOC I-HEZ 111.35	APP CRS 136°	Rwy Idg TDZE Apt Elev	6500 266 272
----------------------------	------------------------	-----------------------------	---

ILS or LOC RWY 13

HARDY-ANDERS FIELD NATCHEZ-ADAMS COUNTY (HE/Z)

ADF or DME required for procedure entry.	MALSR 	MISSED APPROACH: Climb to 2000 then left turn direct HEZ VOR/DME and hold.
Circling to Rwy 36 NA at night. For inop ALS, increase S-LOC 13 Cat C and D visibility to 1 3/8 SM.		

AWOS-3PT 124.675	HOUSTON CENTER 120.975 299.6	UNICOM 122.8 (CTAF) 1
----------------------------	--	---------------------------------



CATEGORY	A	B	C	D
S-ILS 13		466-1/2	200 (200-1/2)	
S-LOC 13	760-1/2	494 (500-1/2)	760-1	494 (500-1)
CIRCLING	760-1 488 (500-1)	800-1 528 (600-1)	1020-2 1/4 748 (800-2 1/4)	1220-3 948 (1000-3)

SC-4, 22 APR 2021 to 20 MAY 2021

SC-4, 22 APR 2021 to 20 MAY 2021