

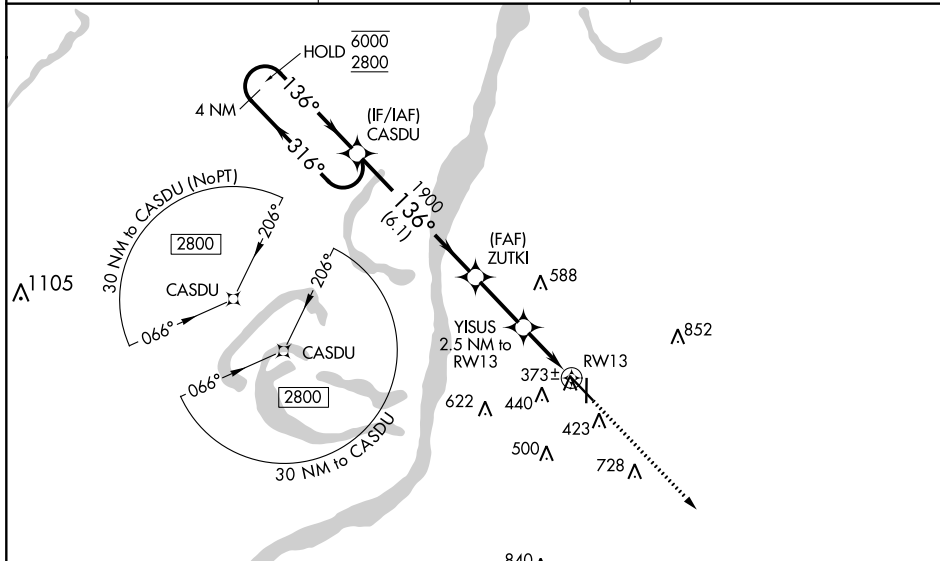
WAAS CH 50505 W13A	APP CRS 136°	Rwy ldg 6500 TDZE 266 Apt Elev 272
--	------------------------	---

RNAV (GPS) RWY 13

HARDY-ANDERS FIELD NATCHEZ-ADAMS COUNTY (HE/Z)

<p>RNP APCH.</p> <p>⚠ Circling to Rwy 36 NA at night. For uncompensated Baro-VNAV systems, LNAV/VNAV NA below -15° C or above 54° C. For inop ALS, increase LNAV/VNAV all Cats visibility to 7/8 SM and LNAV Cat C and D visibility to 1 1/8 SM.</p>		<p>MALS R</p>	<p>MISSED APPROACH: Climb to 2800 direct WEGRA and hold.</p>
---	--	---------------	--

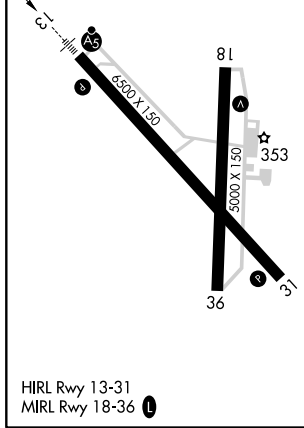
AWOS-3PT 124.675	HOUSTON CENTER 120.975 299.6	UNICOM 122.8 (CTAF)
----------------------------	--	-------------------------------



SC-4, 22 APR 2021 to 20 MAY 2021

SC-4, 22 APR 2021 to 20 MAY 2021

ELEV 272	TDZE 266
----------	----------



<p>4 NM Holding Pattern</p> <p>6000 ← 316°</p> <p>2800 → 136°</p> <p>GP 3.00° TCH 54</p>	CASDU	ZUTKI	YISUS	WEGRA
	<p>4 NM Holding Pattern</p> <p>6000 ← 316°</p> <p>2800 → 136°</p>	<p>1900</p> <p>2.5 NM to RWY 13</p>	<p>1100</p> <p>*1.1 NM to RWY 13</p>	<p>4 NM</p> <p>2800 WEGRA</p>
	6.1 NM	2.5 NM	1.4 NM	1.1 NM
CATEGORY	A	B	C	D
LPV DA	466-1/2		200 (200-1/2)	
LNAV/VNAV DA	534-1/2		268 (300-1/2)	
LNAV MDA	680-1/2 414 (500-1/2)		680-3/4 414 (500-3/4)	
CIRCLING	740-1 468 (500-1)	800-1 528 (600-1)	1020-2 1/4 748 (800-2 1/4)	1220-3 948 (1000-3)

RNAV (GPS) RWY 13