

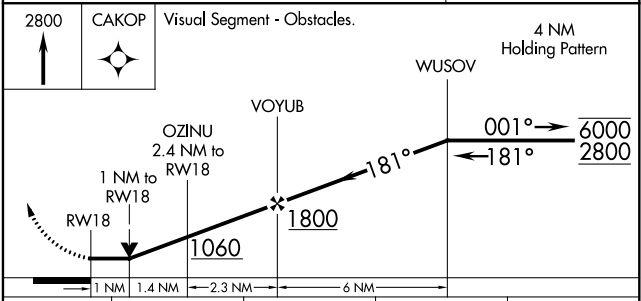
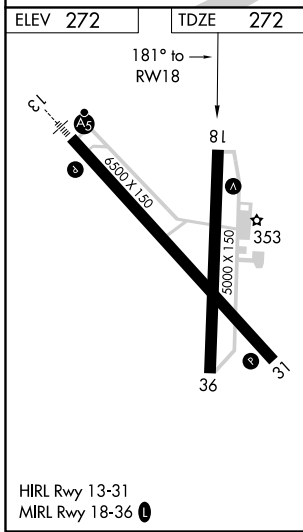
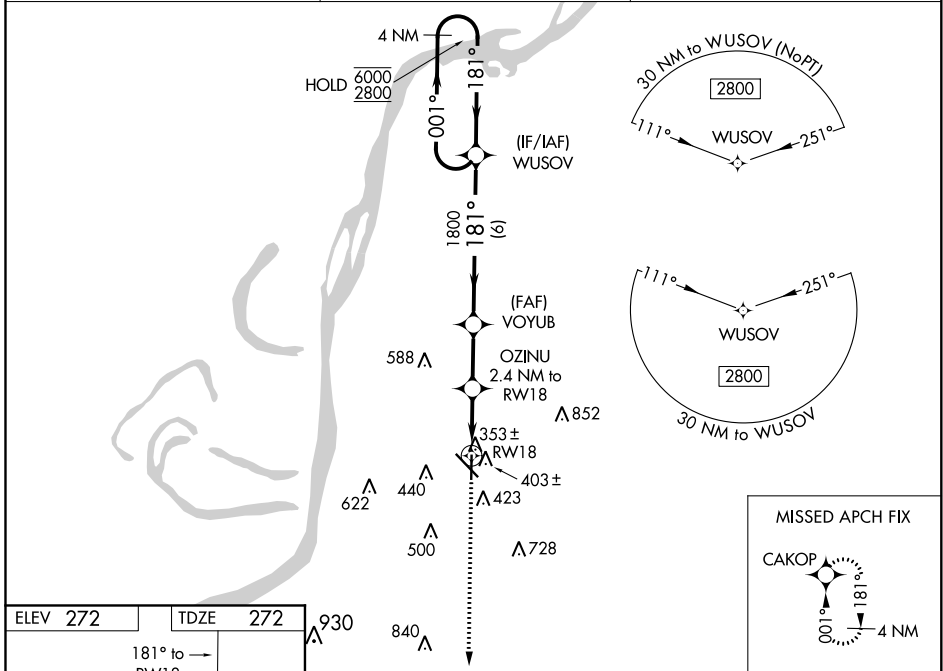
WAAS CH <b>45734</b> <b>W18A</b>	APP CRS <b>181°</b>	Rwy ldg TDZE Apt Elev	<b>5000</b> <b>272</b> <b>272</b>
--	------------------------	-----------------------------	---

# RNAV (GPS) RWY 18

HARDY-ANDERS FIELD NATCHEZ-ADAMS COUNTY (HE/Z)

RNP APCH. ▼ Circling Rwy 36 NA at night. Rwy 18 helicopter visibility reduction below 3/4 SM NA. ▲	MISSED APPROACH: Climb to 2800 direct CAKOP and hold.
--	---

AWOS-3PT <b>124.675</b>	HOUSTON CENTER <b>120.975 299.6</b>	UNICOM <b>122.8 (CTAF) ①</b>
----------------------------	--	---------------------------------



CATEGORY	A	B	C	D
LP MDA	620-1 348 (400-1)			
LNAV MDA	660-1 388 (400-1)	660-1 388 (400-1 1/2)		
<input checked="" type="checkbox"/> CIRCLING	740-1 468 (500-1)	800-1 528 (600-1)	1020-2 748 (800-2 1/4)	1220-3 948 (1000-3)

SC-4, 22 APR 2021 to 20 MAY 2021

SC-4, 22 APR 2021 to 20 MAY 2021