

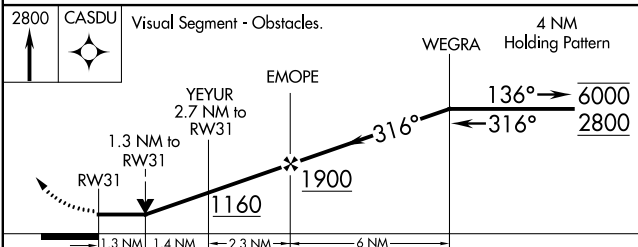
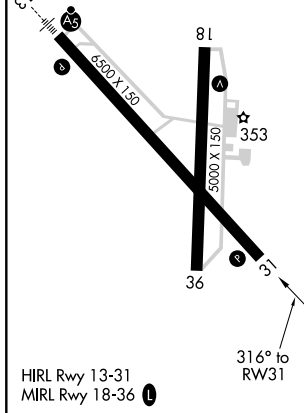
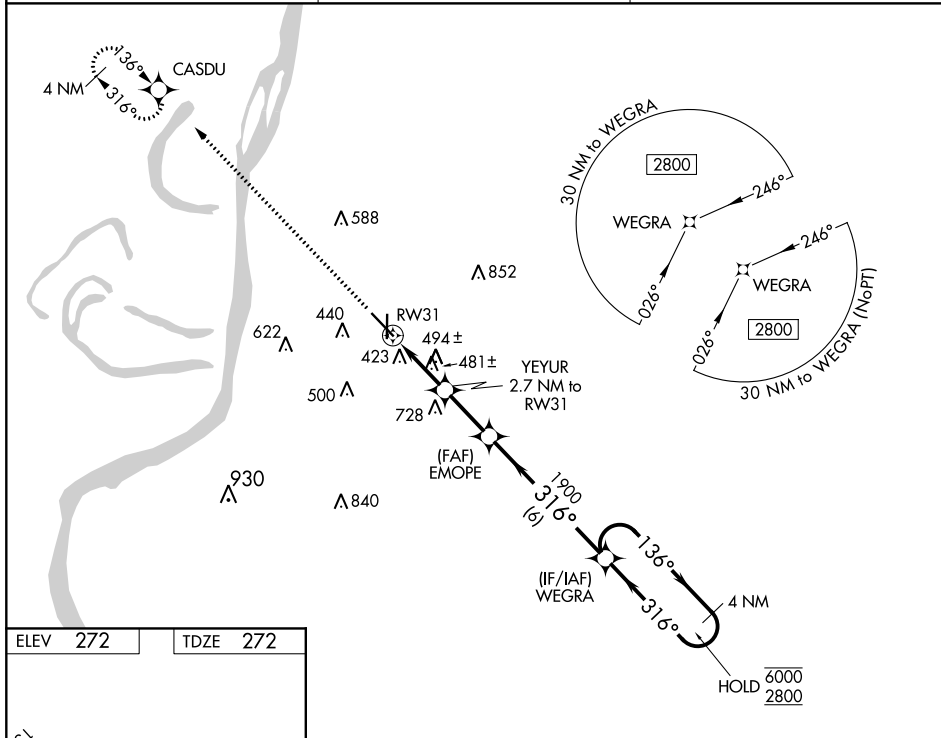
WAAS CH 90334 W31A	APP CRS 316°	Rwy ldg 6500 TDZE 272 Apt Elev 272
--	------------------------	---

RNAV (GPS) RWY 31

HARDY-ANDERS FIELD NATCHEZ-ADAMS COUNTY (HE/Z)

RNP APCH.	MISSED APPROACH: Climb to 2800 direct CASDU and hold.
<p>▼ Circling to Rwy 36 NA at night.</p> <p>▲ Rwy 31 helicopter visibility reduction below ¾ SM NA.</p>	

AWOS-3PT 124.675	HOUSTON CENTER 120.975 299.6	UNICOM 122.8 (CTAF) 0
----------------------------	--	---------------------------------



CATEGORY	A	B	C	D
LP MDA	740-1	468 (500-1)	740-1⅓	468 (500-1⅓)
LNAV MDA	800-1	528 (600-1)	800-1½	528 (600-1½)
CIRCLING	800-1	528 (600-1)	1020-2¼ 748 (800-2¼)	1220-3 948 (1000-3)

SC-4, 22 APR 2021 to 20 MAY 2021

SC-4, 22 APR 2021 to 20 MAY 2021