

WAAS CH 82640 W02A	APP CRS 015°	Rwy Idg TDZE 1359 Apt Elev 1359	6011
---------------------------------	------------------------	---	-------------

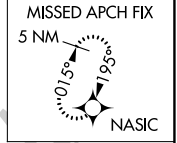
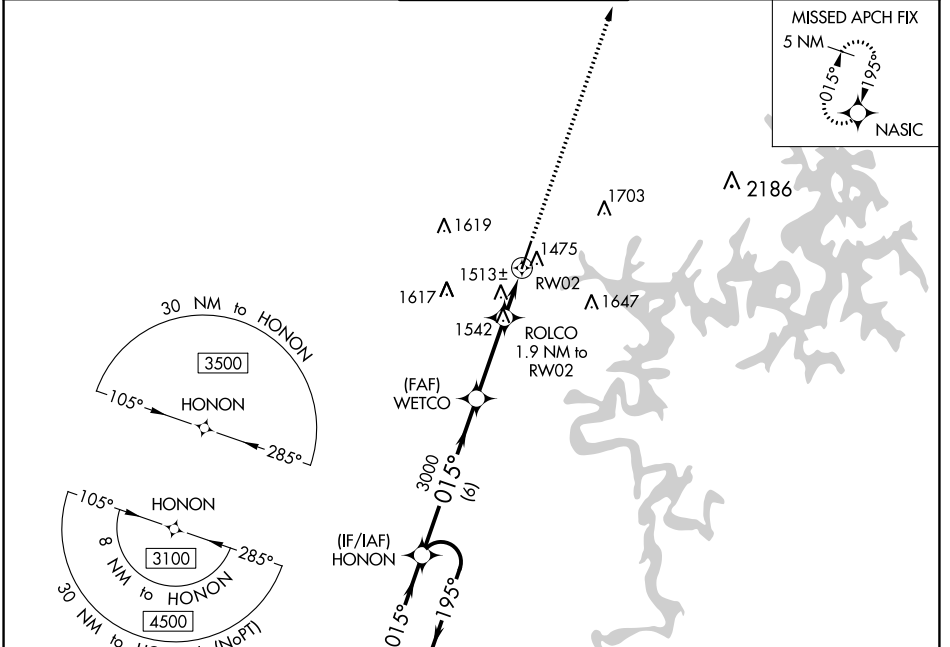
RNAV (GPS) RWY 2

ROGERS EXEC-CARTER FLD (ROG)

▼ For uncompensated Baro-VNAV systems, LNAV/VNAV NA below -17°C (2°F) or above 54°C (130°F). Rwy 2 helicopter visibility reduction below ¾ SM NA. DME/DME RNP-0.3 NA.

MISSED APPROACH: Climb to 3200 direct NASIC and hold.

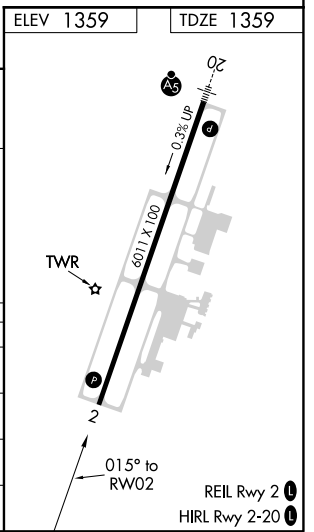
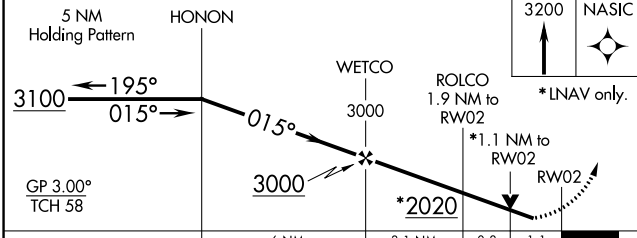
AWOS-3PT 134.375	RAZORBACK APP CON★ 126.6 305.2	ROGERS TOWER★ 119.375 (CTAF) 0	GND CON 118.0	CLNC DEL 121.75
----------------------------	--	--	-------------------------	---------------------------



SC-1, 22 APR 2021 to 20 MAY 2021

SC-1, 22 APR 2021 to 20 MAY 2021

ELEV 1359	TDZE 1359
-----------	-----------



CATEGORY	A	B	C	D
LPV DA		1620-7/8	261 (300-7/8)	
LNAV/VNAV DA		1674-1	315 (400-1)	
LNAV MDA	1780-1	421 (500-1)	1780-1¼	421 (500-1¼)
CIRCLING	1820-1	461 (500-1)	2020-1¾ 661 (700-1¾)	2020-2 661 (700-2)