

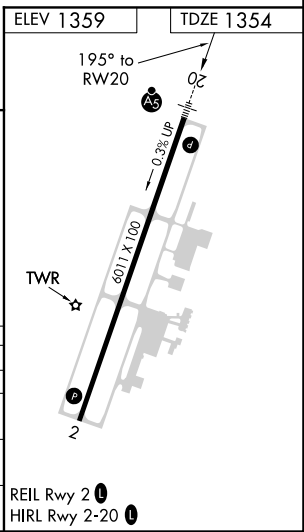
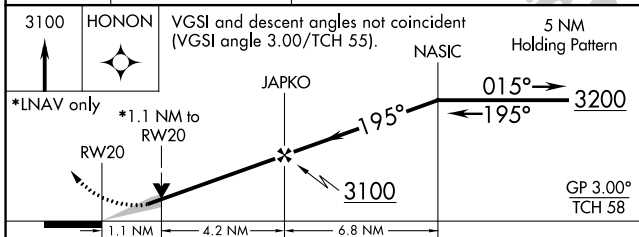
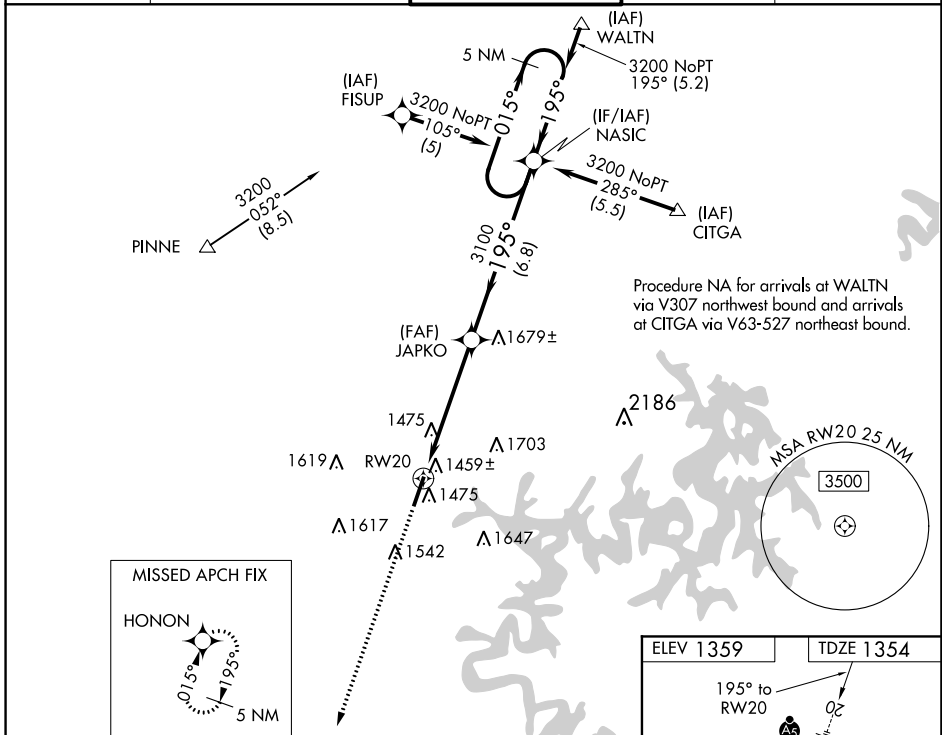
WAAS CH 40003 W20A	APP CRS 195°	Rwy ldg 6011 TDZE 1354 Apt Elev 1359
--	------------------------	---

RNAV (GPS) RWY 20

ROGERS EXEC-CARTER FLD (ROG)

<p>▼ For inop MALS, increase LNAV Cat D to 1½. For uncompensated Baro-VNAV systems, LNAV/VNAV NA below -17°C (2°F) or above 46°C (114°F). DME/DME RNP-0.3 NA. If local altimeter setting not received, use Bentonville Muni altimeter setting and increase all DAs 22 feet and all MDAs 40 feet. Baro-VNAV and VDP NA when using Bentonville Muni altimeter setting.</p>		<p>MALS R</p>	<p>MISSED APPROACH: Climb to 3100 direct HONON and hold.</p>
--	--	---------------	--

AWOS-3PT 134.375	RAZORBACK APP CON* 126.6 305.2	ROGERS TOWER* 119.375 (CTAF)	GND CON 118.0	CLNC DEL 121.75
----------------------------	--	--	-------------------------	---------------------------



CATEGORY	A	B	C	D
LPV DA	1604-½		250 (300-½)	
LNAV/VNAV DA	1730-¾		376 (400-¾)	
LNAV MDA	1740-½		386 (400-½)	
	1740-1		386 (400-1)	
CIRCLING	1820-1	461 (500-1)	2020-1¾ 661 (700-1¾)	2020-2 661 (700-2)

SC-1, 22 APR 2021 to 20 MAY 2021

SC-1, 22 APR 2021 to 20 MAY 2021