

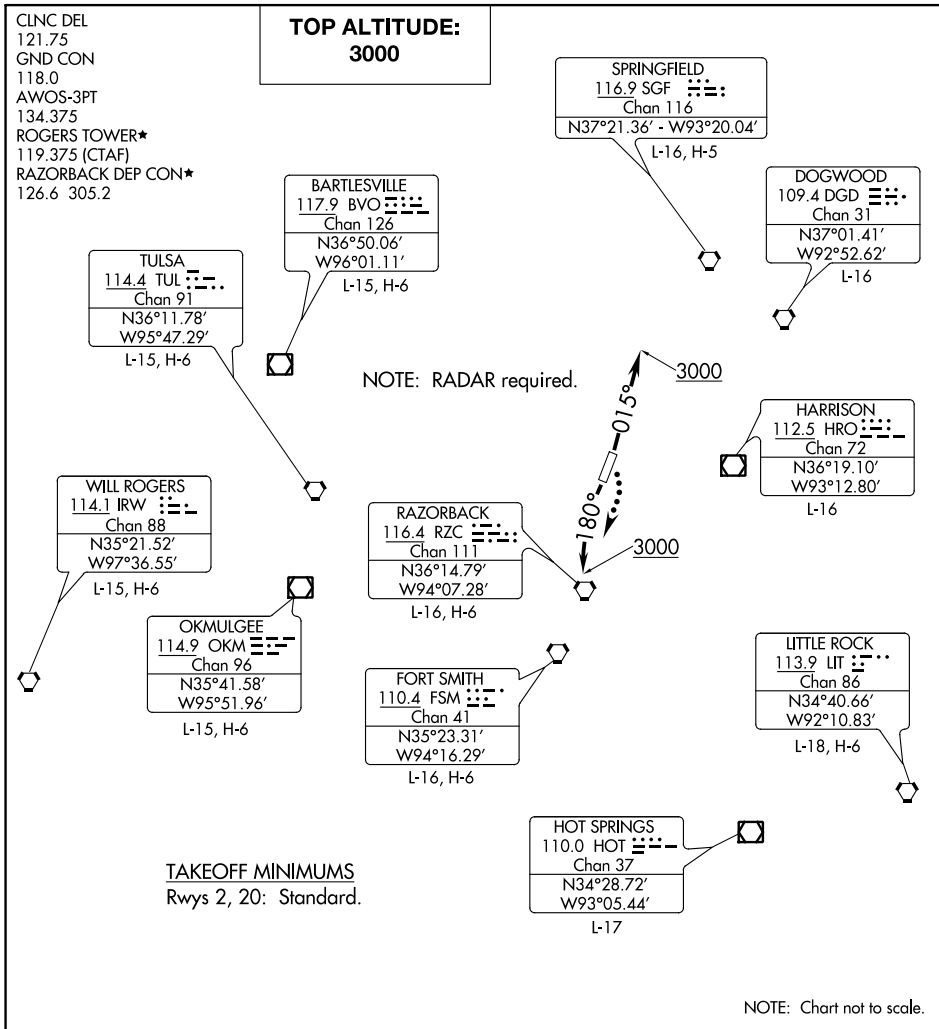
(ROG3.RZC) 21112

ROGERS THREE DEPARTURE

AL-5002 (FAA)

ROGERS EXEC-CARTER FLD (ROG)

ROGERS, ARKANSAS



SC-1, 22 APR 2021 to 20 MAY 2021

SC-1, 22 APR 2021 to 20 MAY 2021

DEPARTURE ROUTE DESCRIPTION

TAKEOFF RUNWAY 2: Climb on heading 015° to 3000, thence . . .

TAKEOFF RUNWAY 20: Climbing left turn to 3000 on heading 180°, thence . . .

. . . expect RADAR vectors to assigned route.

Expect clearance to requested altitude ten minutes after departure.

LOST COMMUNICATIONS: If communications are not established within 2 minutes after departure climb and maintain 5000 feet and proceed direct RZC VORTAC, then proceed on course.

ROGERS THREE DEPARTURE

(ROG3.RZC) 05DEC19

ROGERS, ARKANSAS

ROGERS EXEC-CARTER FLD (ROG)