

APP CRS	Rwy Idg	4297
039°	TDZE	179
	Apt Elev	195

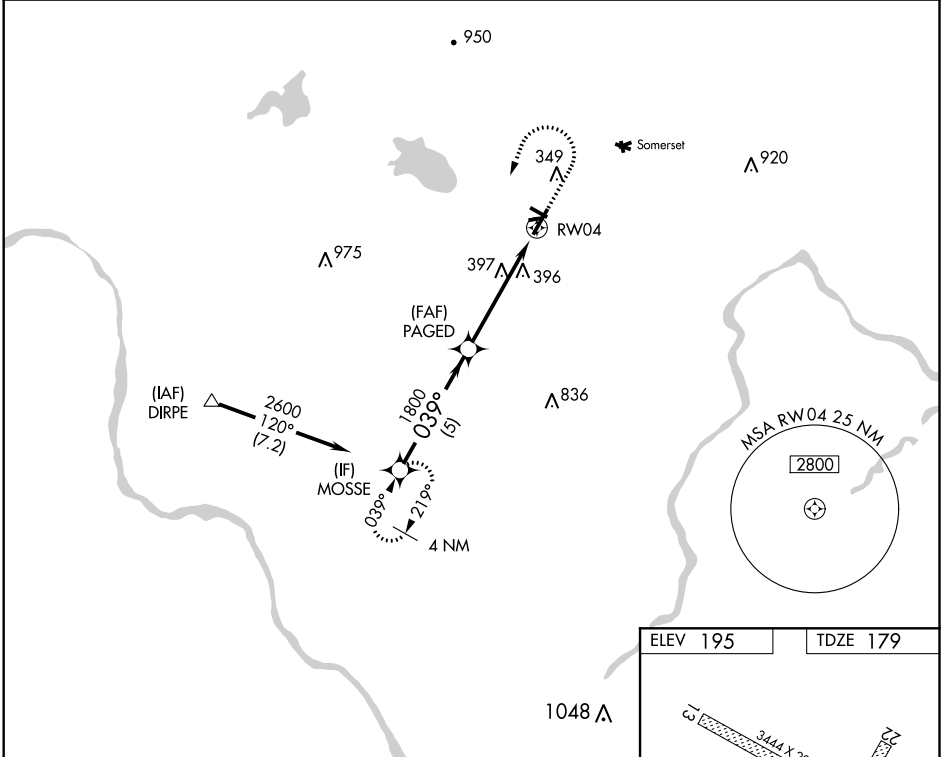
RNAV (GPS) RWY 4

SOLBERG-HUNTERDON (N51)

⚠ Obtain local altimeter setting on CTAF, when not received, use Newark Liberty Intl altimeter setting. DME/DME RNP-0.3 NA. Circling NA to Rwy's 10-28 and 13-31. Rwy 4 helicopter visibility reduction below 3/4 SM NA.

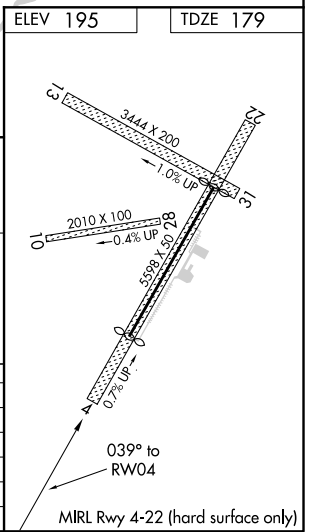
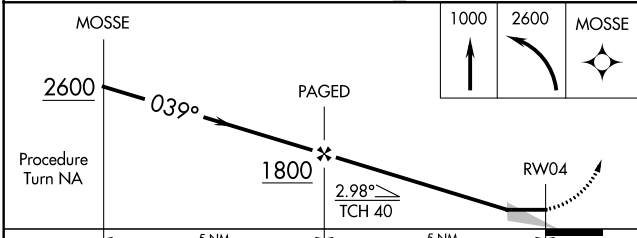
MISSED APPROACH: Climb to 1000, then climbing left turn to 2600 direct MOSSE WP and hold.

NEW YORK APP CON 132.8 379.9	GCO 121.725	UNICOM 122.8 (CTAF)
--	-----------------------	-------------------------------



NE-2, 22 APR 2021 to 20 MAY 2021

NE-2, 22 APR 2021 to 20 MAY 2021



CATEGORY	A	B	C	D
RNAV MDA	700-1	521 (600-1)		NA
CIRCLING	700-1	505 (600-1)		NA
NEWARK LIBERTY INTL ALTIMETER SETTING MINIMUMS				
RNAV MDA	800-1	621 (700-1)		NA
CIRCLING	800-1	605 (700-1)		NA