


WAAS CH 53499 W15A	APP CRS 147°	Rwy Idg TDZE 1158 Apt Elev 1160	5535
--	------------------------	---	-------------

RNAV (GPS) RWY 15

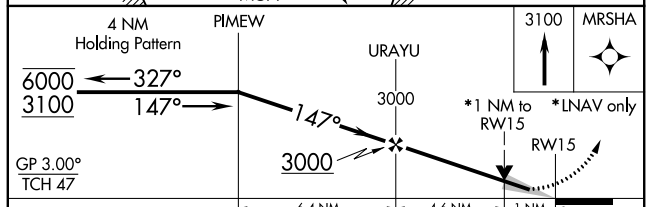
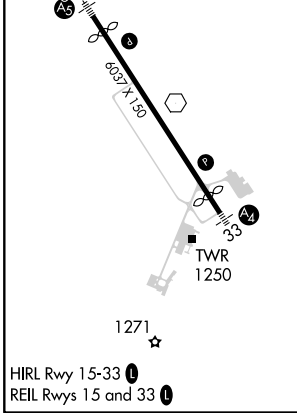
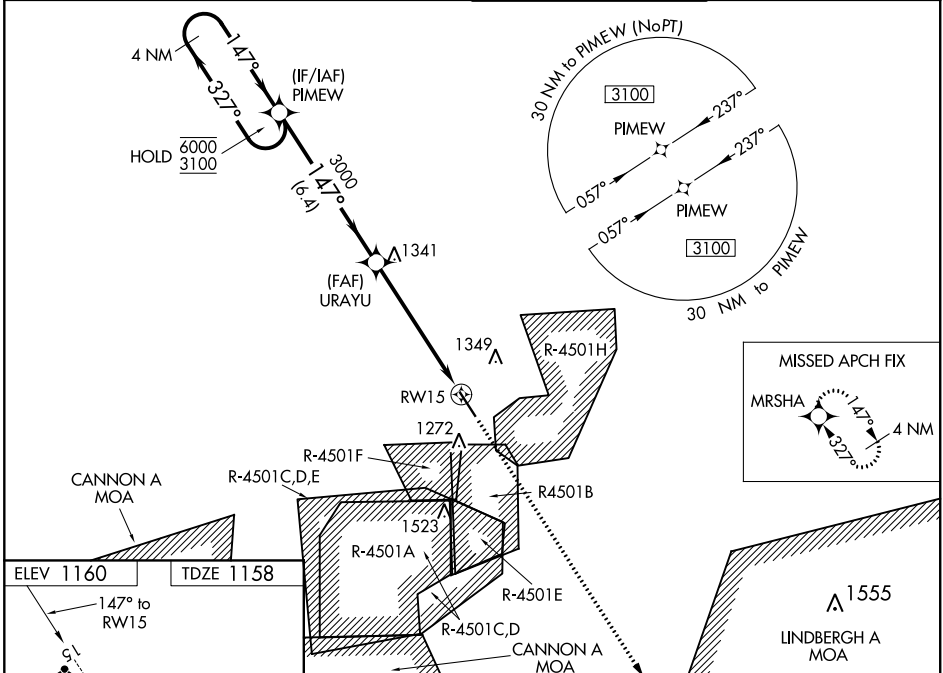
WAYNESVILLE-ST ROBERT RGNL FORNEY FLD (TBN)

RNP APCH.

⚠ For uncompensated Baro-VNAV systems, LNAV/VNAV NA below -18°C or above 54°C.
⚠ VDP and Baro-VNAV NA when using Rolla Nil altimeter setting. When local altimeter setting not received, use Rolla Nil altimeter setting and increase all LPV DA to 1427 and LNAV/VNAV DA to 1477; increase all MDAs 80 feet. Inop table does not apply. For inop ALS when using Rolla Nil altimeter setting increase LNAV Cat C/D visibility to 1 3/8 SM. Circling NA west of Rwy 15-33. Inop table does not apply to LPV, LNAV/VNAV, all Cats, and LNAV Cats A/B minimums when using Rolla Nil altimeter setting.

MALSR  MISSED APPROACH: Climb to 3100 direct MRSHA and hold.

D-ATIS 118.7 229.4	KANSAS CITY CENTER 128.35 284.675	FORNEY TOWER * 125.4 (CTAF) 0 268.7	GND CON 123.75 256.8
------------------------------	---	---	--------------------------------



CATEGORY	A	B	C	D
LPV DA		1358-1	200 (200-1)	
LNAV/ VNAV DA		1408-1	250 (300-1)	
LNAV MDA		1520-1	362 (400-1)	
C CIRCLING	1580-1 420 (500-1)	1660-1 500 (500-1)	1660-1 1/2 500 (500-1 1/2)	1720-2 560 (600-2)

NC-3, 22 APR 2021 to 20 MAY 2021

NC-3, 22 APR 2021 to 20 MAY 2021