

VOR TBN 110.0	APP CRS 329°	Rwy Idg 5510
		TDZE 1153
		Apt Elev 1160

VOR RWY 33

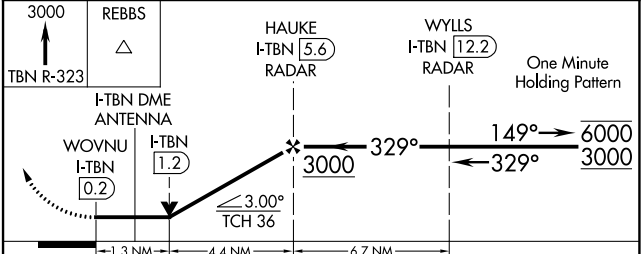
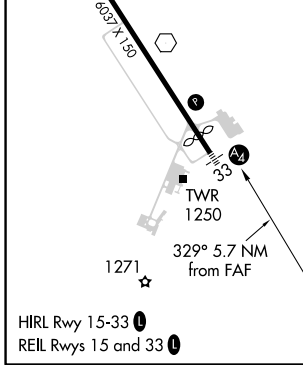
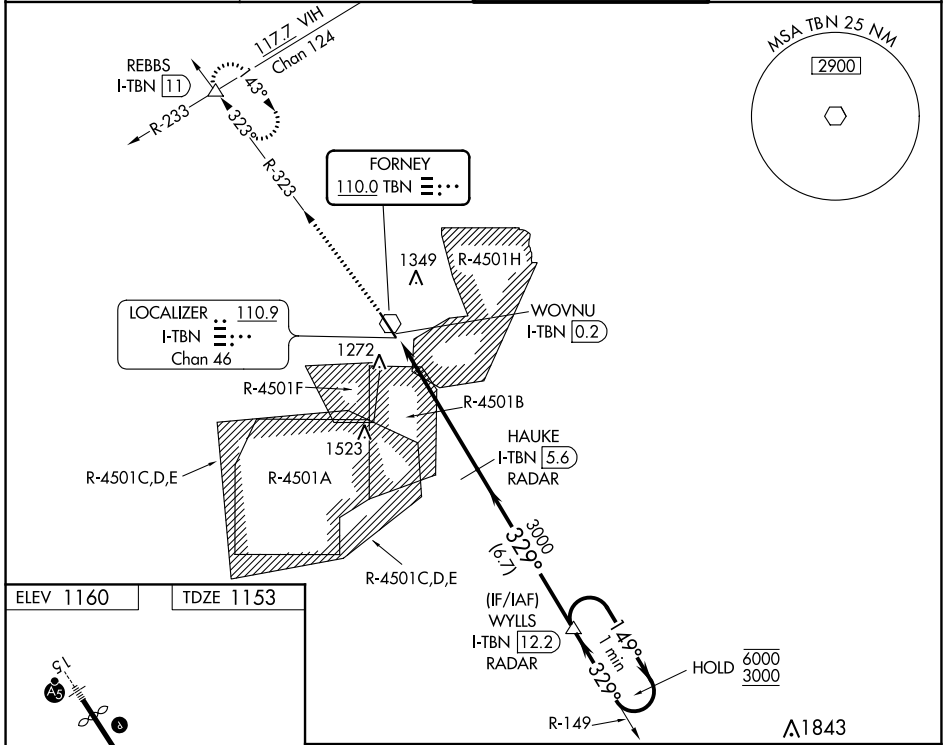
WAYNESVILLE-ST ROBERT RGNL FORNEY FLD (T'BN)

DME or RADAR required. RADAR required for procedure entry.

⚠ When local altimeter not received, use Rolla Ntl altimeter setting and increase all MDAs 80 feet. Increase S-33 Cats C/D visibility to 1¼ SM. Procedure NA when R-4501B or R-4501H in use. Circling NA west of Rwy 15-33. Rwy 33 helicopter visibility reduction below ¾ SM NA. Inop table does not apply to Cats A and B. For inop ALS, increase Cats C and D visibility to 1¾ SM. Inop table does not apply to Cats A and B when using Rolla Ntl altimeter setting.

MALS
 MISSED APPROACH: Climb to 3000 on TBN VOR R-323 to REBBS INT/I-TBN LOC/DME 11 DME and hold.

D-ATIS 118.7 229.4	KANSAS CITY CENTER 128.35 284.675	FORNEY TOWER ★ 125.4 (CTAF) 0 268.7	GND CON 123.75 256.8
------------------------------	---	---	--------------------------------



CATEGORY	A	B	C	D
S-33	1600-1 447 (500-1)			
C CIRCLING	1600-1 440 (500-1)	1660-1 500 (500-1)	1660-1½ 500 (500-1½)	1720-2 560 (600-2)

NC-3, 22 APR 2021 to 20 MAY 2021

NC-3, 22 APR 2021 to 20 MAY 2021