

LOC/DME I-FJD 110.55 Chan 42 (Y)	APP CRS 097°	Rwy Idg 6492 TDZE 23 Apt Elev 23
--	------------------------	---

ILS or LOC RWY 10R

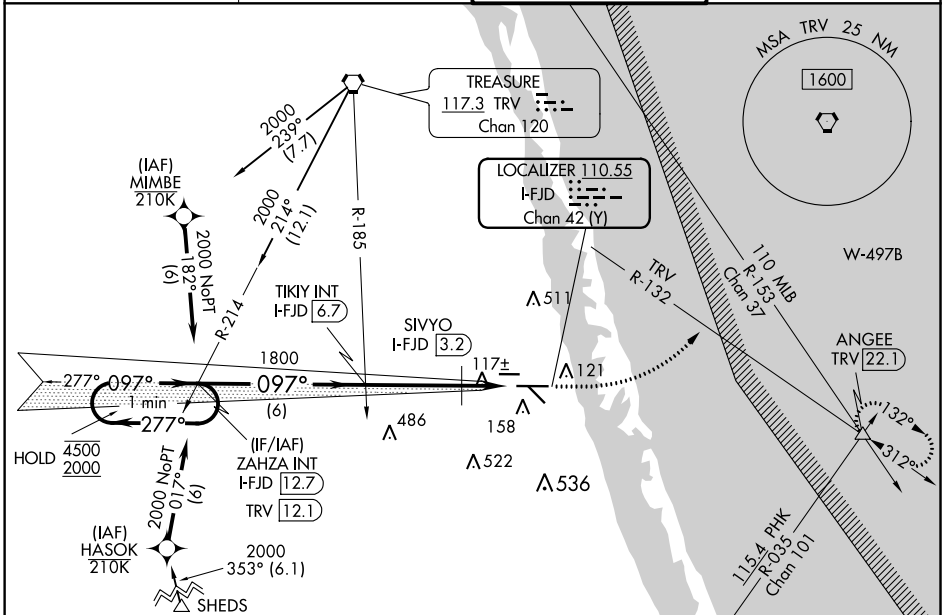
TREASURE COAST INTL (FPR)

RNAV 1-GPS or DME required for procedure entry.

Autopilot coupled approach NA below 720 MSL.

MISSED APPROACH: Climb to 1000 then climbing left turn to 2000 on heading 080° and TRV VORTAC R-132 to ANGEE INT/TRV 22.1 DME and hold.

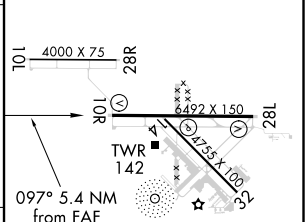
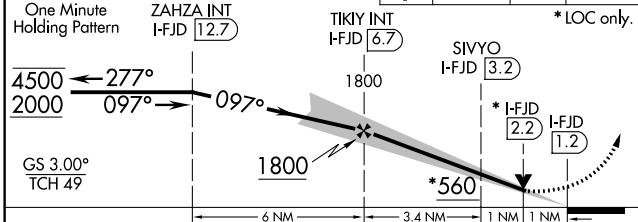
ATIS 134.825	PALM BEACH APP CON 132.8	FORT PIERCE TOWER * 128.2 (CTAF)	GND CON 119.55
------------------------	------------------------------------	--	--------------------------



SE-3, 22 APR 2021 to 20 MAY 2021

SE-3, 22 APR 2021 to 20 MAY 2021

VGSI and ILS glidepath not coincident (VGSI Angle 3.00/TCH 52).	1000	2000	ANGEE	ELEV 23	TDZE 23
	↑	hdg 080°	TRV R-132		



CATEGORY	A	B	C	D		
S-ILS 10R	273-¾ 250 (300-¾)					
S-LOC 10R	560-1	537 (600-1)	560-1½	537 (600-1½)		
CIRCLING	560-1	537 (600-1)	880-2½ 857 (900-2½)	880-2¾ 857 (900-2¾)		
SIVYO FIX MINIMUMS (DME REQUIRED)						
S-LOC 10R	380-1	357 (400-1)				
CIRCLING	460-1 437 (500-1)	480-1 457 (500-1)	880-2½ 857 (900-2½)	880-2¾ 857 (900-2¾)		
REIL Rwy 10R and 28L MRL all Rwy 1						
FAF to MAP 5.4 NM						
Knots		60	90	120	150	180
Min:Sec		5:24	3:36	2:42	2:10	1:48