

WAAS CH 86904 W23A	APP CRS 230°	Rwy Idg TDZE Apt Elev	5500 185 192
--	------------------------	-----------------------------	---

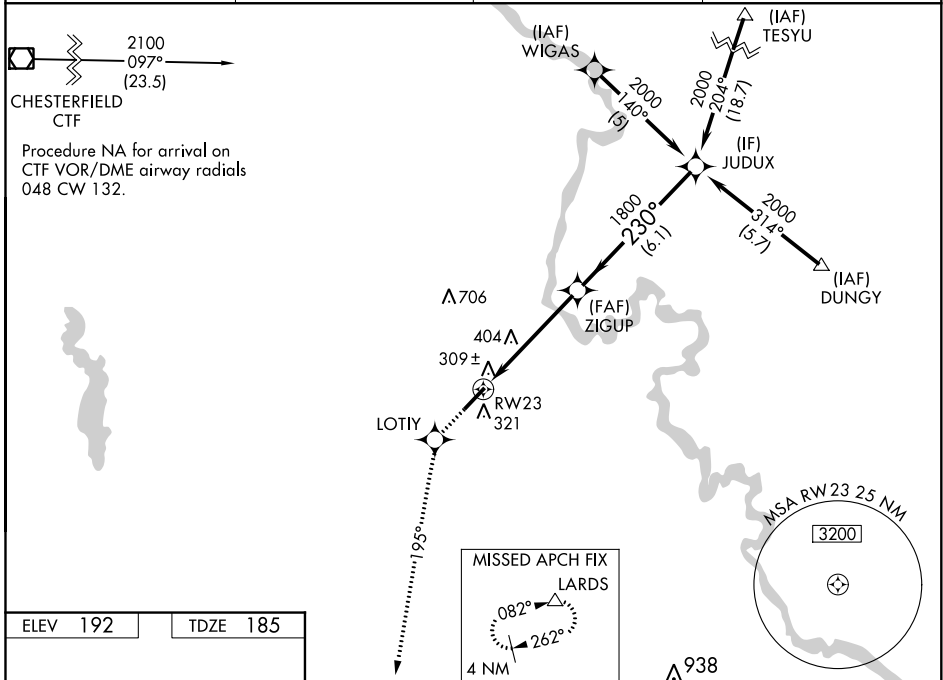
RNAV (GPS) RWY 23

DARLINGTON COUNTY (UDG)

▼ For uncompensated Baro-VNAV systems, LNAV/VNAV NA below -1.5°C (5°F) or above 48°C (118°F). When local altimeter setting not received, use Florence altimeter setting and increase LPV DA to 527, LNAV/VNAV DA to 627, and all MDA 60 feet; increase LPV all Cats visibility ¼ mile. DME/DME RNP-0.3 NA. Helicopter visibility reduction below ¼ SM NA. Baro-VNAV NA when using Florence altimeter setting.

MISSED APPROACH:
Climb to 2000 direct LOTIY and via 195° track to LARDS and hold.

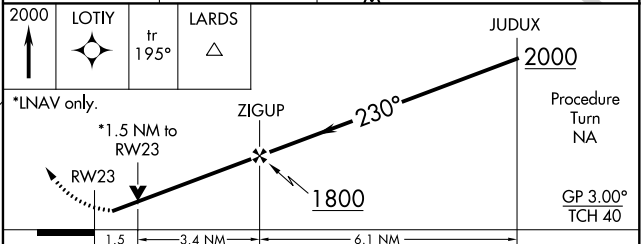
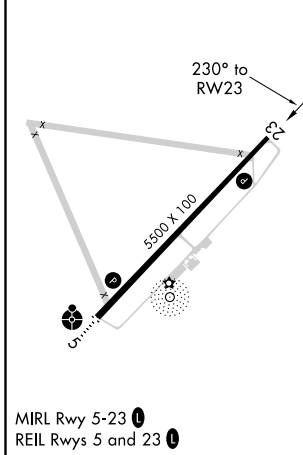
AWOS-3PT 119.925	FLORENCE APP CON* 118.6 341.7	CLNC DEL 118.55	UNICOM 123.0(CTAF) 0
----------------------------	---	---------------------------	--------------------------------



SE-2, 22 APR 2021 to 20 MAY 2021

SE-2, 22 APR 2021 to 20 MAY 2021

ELEV 192	TDZE 185
----------	----------



CATEGORY	A	B	C	D
LPV DA	479-1 294 (300-1)			
LNAV/VNAV DA	579-1½ 394 (400-1½)			
LNAV MDA	700-1	515 (600-1)	700-1½ 515 (600-1½)	700-1¾ 515 (600-1¾)
CIRCLING	700-1	508 (600-1)	700-1½ 508 (600-1½)	760-2 568 (600-2)