

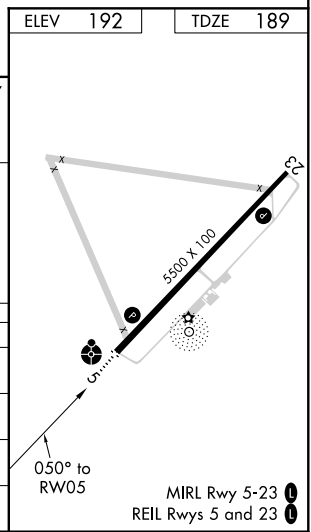
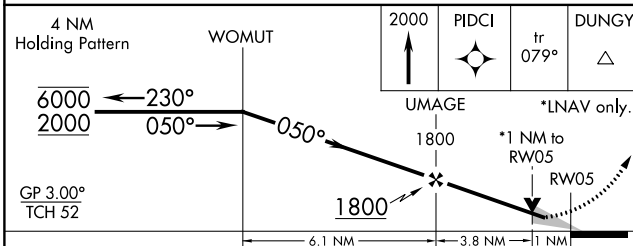
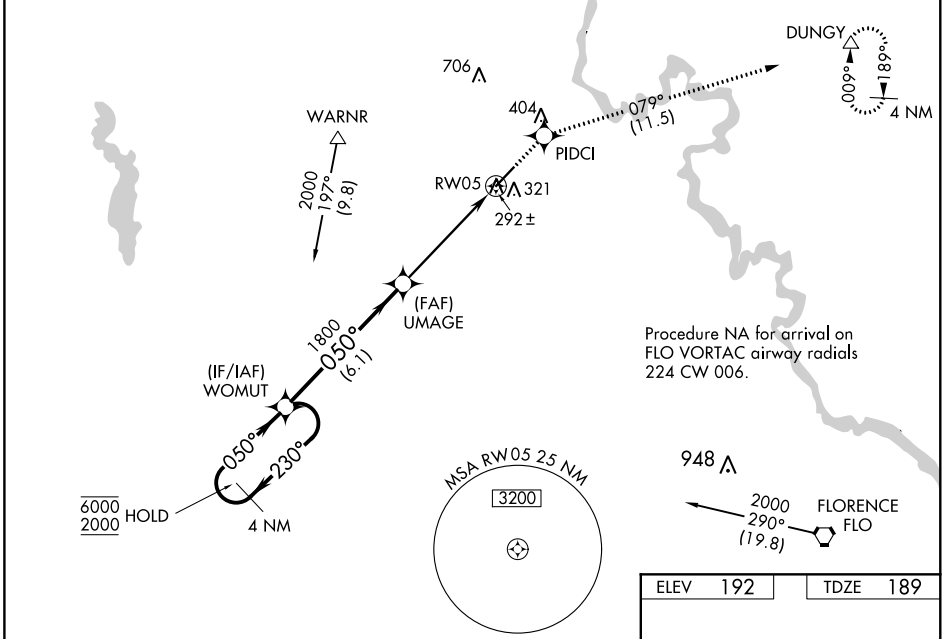
WAAS CH <b>42704</b> <b>W05A</b>	APP CRS <b>050°</b>	Rwy Idg TDZE Apt Elev	<b>5500</b> <b>189</b> <b>192</b>
--	------------------------	-----------------------------	---

# RNAV (GPS) RWY 5

DARLINGTON COUNTY (UDG)

RNP APCH.	ODALS	MISSED APPROACH: Climb to 2000 direct PIDCI and on track 079° to DUNGY and hold.
<p>Inop table does not apply. For uncompensated Baro-VNAV systems, LNAV/VNAV NA below -15°C or above 54°C.</p>		

AWOS-3PT <b>119.925</b>	FLORENCE APP CON * <b>118.6 341.7</b>	CLNC DEL <b>118.55</b>	UNICOM <b>123.0(CTAF) 0</b>
----------------------------	--	---------------------------	--------------------------------



CATEGORY	A	B	C	D
LPV DA		493-1	304 (400-1)	
LNAV/VNAV DA		562-1¼	373 (400-1¼)	
LNAV MDA		560-1	371 (400-1)	560-1¼ 371 (400-1¼)
CIRCLING	640-1 448 (500-1)	660-1 468 (500-1)	660-1½ 468 (500-1½)	760-2 568 (600-2)

SE-2, 22 APR 2021 to 20 MAY 2021

SE-2, 22 APR 2021 to 20 MAY 2021