

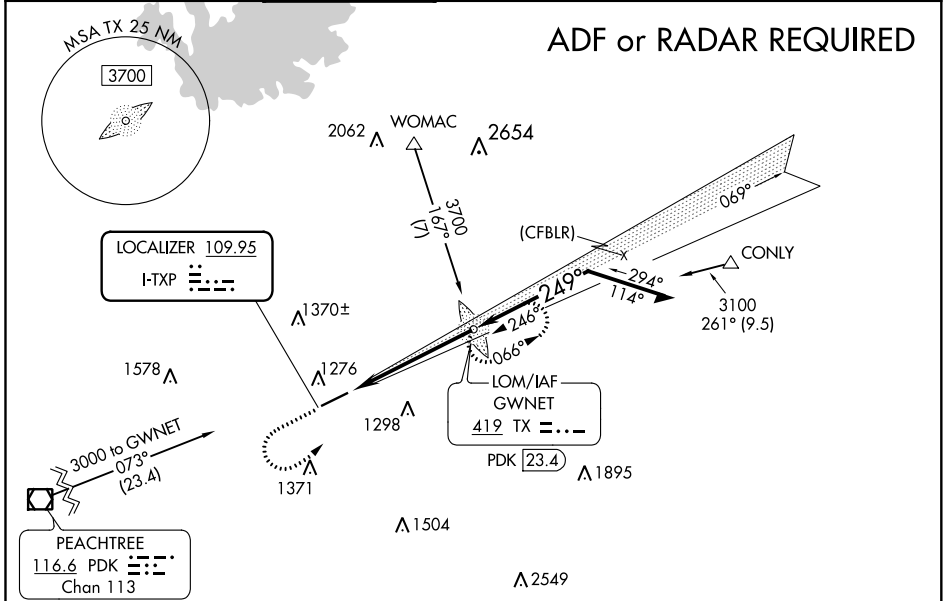
LOC I-TXP <b>109.95</b>	APP CRS <b>249°</b>	Rwy Idg 6000	TDZE 1038	Apt Elev 1062
----------------------------	------------------------	-----------------	--------------	------------------

# ILS or LOC RWY 25

GWINNETT COUNTY-BRISCOE FIELD (LZU)

<p><b>⚠</b> When local altimeter setting not received, use Winder altimeter setting and increase all DA 51 feet, and all MDA 60 feet, increase S-LOC 25 Cat C/D and Circling Cat C/D visibility 1/2 SM. ADF required. For inop MALSR, when using Winder altimeter setting increase S-ILS 25 all Cats visibility to 3/8 SM.</p>		<p>MALSR</p>	<p>MISSED APPROACH: Climb to 1800 then climbing left turn to 3000 direct GWNET LOM and hold.</p>			
ATIS <b>132.275</b>	ATLANTA APP CON <b>126.975 239.275</b>	GWINNETT TOWER * <b>124.1</b> (CTAF) <b>0</b>	GND CON <b>121.8</b>	CLNC DEL <b>121.8</b>	CLNC DEL <b>134.0</b> (When twr closed)	UNICOM <b>123.05</b>

## ADF or RADAR REQUIRED



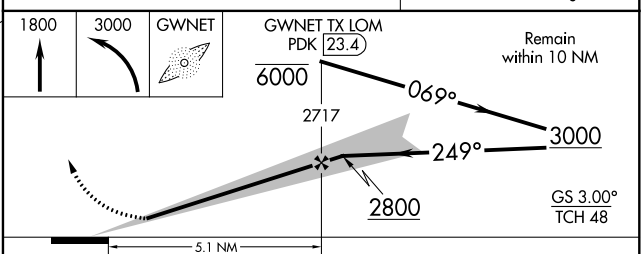
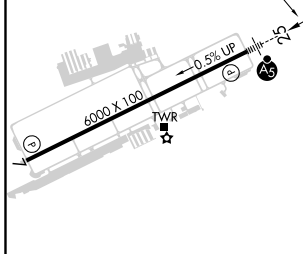
SE-4, 22 APR 2021 to 20 MAY 2021

SE-4, 22 APR 2021 to 20 MAY 2021

ELEV 1062	TDZE 1038
-----------	-----------

ALTERNATIVE MISSED APCH FIX

GWNET  
419 TX **---**  
PDK **23.4**



CATEGORY	A	B	C	D
S-ILS 25		1238-1/2	200 (200-1/2)	
S-LOC 25	1540-1/2	502 (500-1/2)	1540-1	502 (500-1)
CIRCLING	1640-1	578 (600-1)	1640-1 1/2 578 (600-1 1/2)	1700-2 638 (700-2)