

WAAS CH 97621 W07A	APP CRS 069°	Rwy Idg TDZE Apt Elev	6000 1061 1062
--	------------------------	-----------------------------	---

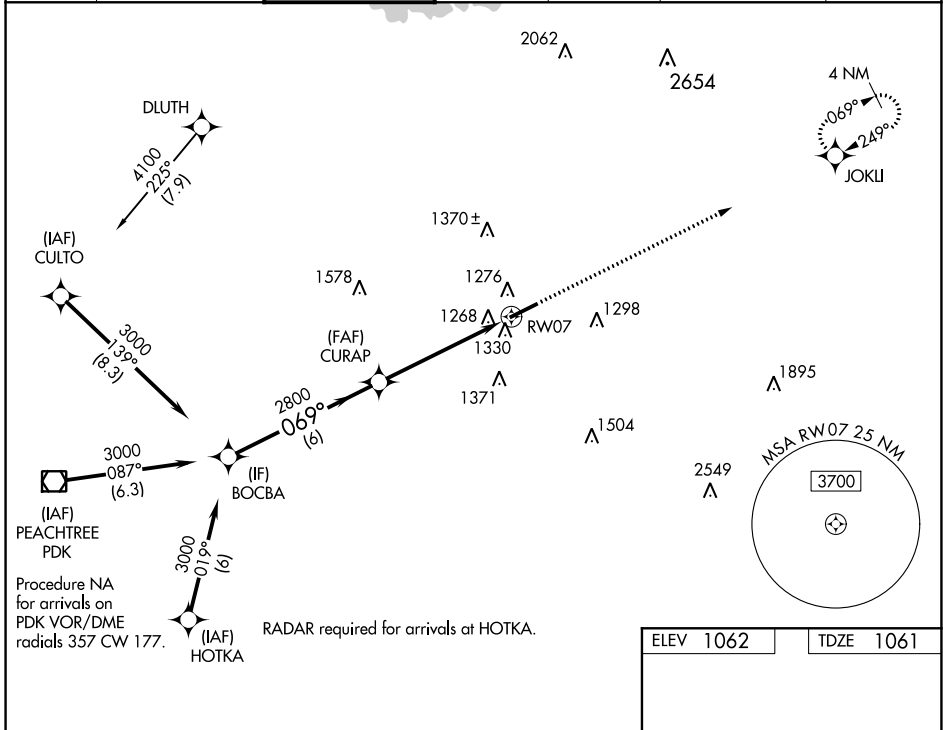
RNAV (GPS) RWY 7

GWINNETT COUNTY-BRISCOE FIELD (LZU)

⚠ DME/DME RNP-0.3 NA. When local altimeter setting not received, use Winder altimeter setting and increase all MDA 60 feet and LNAV and Circling Cats C/D visibility 1/4 mile.
⚠ Rwy 7 helicopter visibility reduction below 3/4 SM NA.

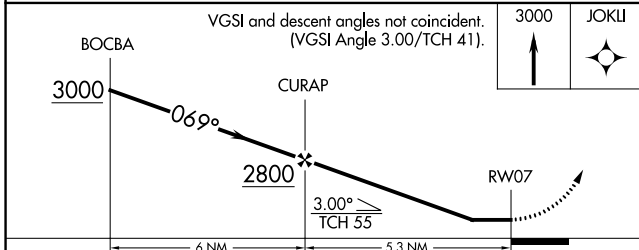
MISSED APPROACH:
Climb to 3000 direct JOKLI and hold.

ATIS 132.275	ATLANTA APP CON 126.975 239.275	GWINNETT TOWER * 124.1 (CTAF) 0	GND CON 121.8	CLNC DEL 121.8	CLNC DEL 134.0 (When twr closed)	UNICOM 123.05
------------------------	---	---	-------------------------	--------------------------	---	-------------------------



SE-4, 22 APR 2021 to 20 MAY 2021

SE-4, 22 APR 2021 to 20 MAY 2021



CATEGORY	A		B		C		D	
	LP	MDA	LP	MDA	LP	MDA	LP	MDA
LP	1520-1	459 (500-1)	1520-1 3/8	459 (500-1 1/8)	1520-1 3/8	459 (500-1 1/8)	1520-1 3/8	459 (500-1 1/8)
LNAV	1580-1	519 (600-1)	1580-1 3/8	519 (600-1 1/8)	1580-1 3/8	519 (600-1 1/8)	1580-1 3/8	519 (600-1 1/8)
CIRCLING	1640-1	578 (600-1)	1640-1 1/2	578 (600-1 1/2)	1640-1 1/2	578 (600-1 1/2)	1700-2	638 (700-2)

