

WAAS CH <b>40030</b> <b>W26A</b>	APP CRS <b>256°</b>	Rwy Idg TDZE Apt Elev	<b>2810</b> <b>523</b> <b>523</b>
--	------------------------	-----------------------------	---

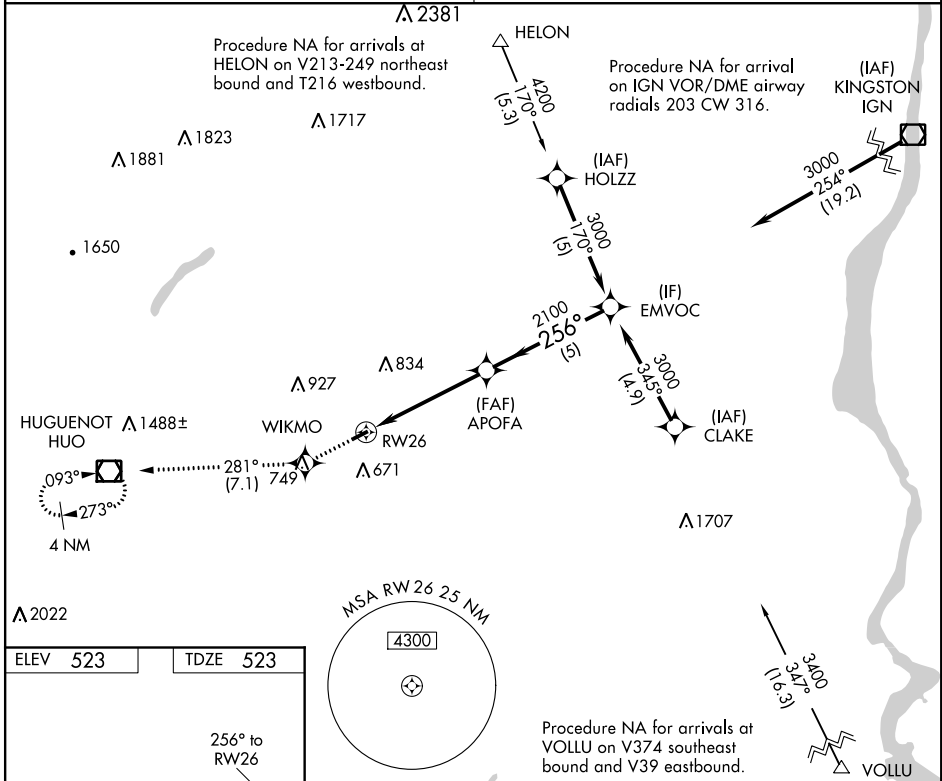
# RNAV (GPS) RWY 26

RANDALL (Ø6N)

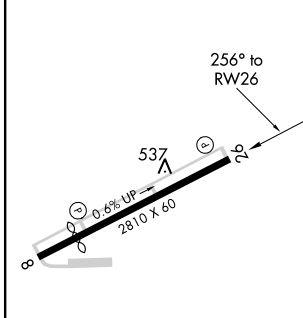
RNP APCH. Procedure NA at night. Rwy 26 helicopter visibility reduction below 1 SM NA. Use Newburgh altimeter setting; when not received, use Montgomery altimeter setting.

MISSED APPROACH: Climb to 3500 direct WIKMO and on track 281° to HVO VOR/DME and hold, continue climb-in-hold to 3500.

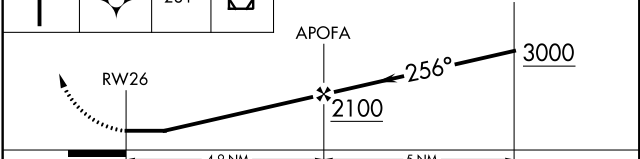
NEW YORK APP CON <b>132.75 363.1</b>	UNICOM <b>122.8 (CTAF) 0</b>
---	---------------------------------



ELEV 523	TDZE 523
----------	----------



3500	WIKMO	tr 281°	HVO	Visual Segment - Obstacles.
------	-------	---------	-----	-----------------------------



CATEGORY	A	B	C	D
LP MDA	1020-1 497 (500-1)		NA	
LNAV MDA	1060-1 537 (600-1)		NA	
CIRCLING	1080-1 557 (600-1)		NA	

NE-2, 22 APR 2021 to 20 MAY 2021

NE-2, 22 APR 2021 to 20 MAY 2021