

WAAS CH 40302 W35A	APP CRS 355°	Rwy Idg TDZE Apt Elev	4488 70 70
--	------------------------	-----------------------------	---------------------------------------

RNAV (GPS) RWY 35

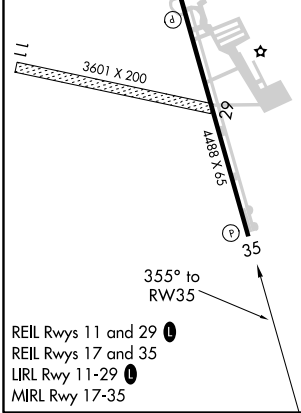
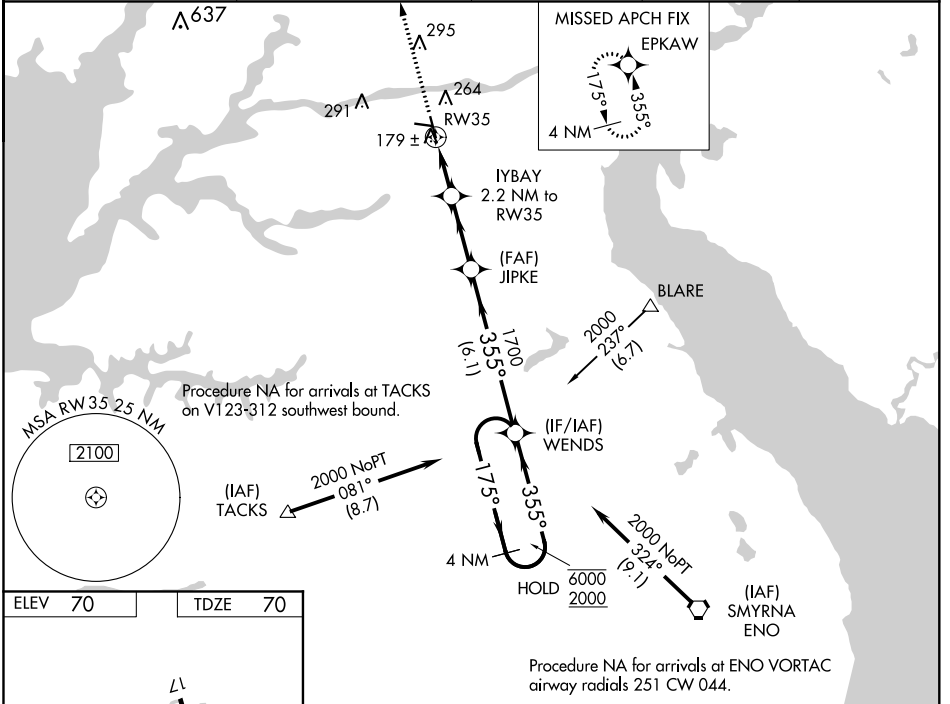
SUMMIT (EVY)

RNP APCH.

Baro-VNAV and VDP NA when using Wilmington altimeter setting. Rwy 35 helicopter visibility reduction below 3/4 SM NA. For uncompensated Baro-VNAV systems, LNAV/VNAV NA below -15°C or above 47°C. When local altimeter setting not received, use Wilmington altimeter setting and increase all DA 27 feet, all MDA 40 feet and LNAV Cat C visibility 1/8 SM.

MISSED APPROACH: Climb to 2000 direct EPKAW and hold.

AWOS-3 132.325	PHILADELPHIA APP CON 118.35 323.1	CLNC DEL 125.3	UNICOM 122.725 (CTAF)	123.5
--------------------------	---	--------------------------	---------------------------------	--------------



2000	EPKAW	VGSI and RNAV glidepath not coincident (VGSI Angle 3.00/TCH 41).		4 NM Holding Pattern
		IYBAY 2.2 NM to RW35	JIPKE 1700	WENDS
* LNAV only.	* 1.3 NM to RW35			175° → 6000
				← 355° 2000
				GP 3.00° TCH 50
CATEGORY	A	B	C	D
LPV DA	320-1 250 (300-1)			
LNAV/VNAV DA	480-1½ 410 (500-1½)			
LNAV MDA	440-1 370 (400-1)			440-1¼ 370 (400-1¼)

NE-3, 22 APR 2021 to 20 MAY 2021

NE-3, 22 APR 2021 to 20 MAY 2021