

APP CRS	Rwy Idg	<b>4440</b>
<b>146°</b>	TDZE	<b>721</b>
	Apt Elev	<b>742</b>

# RNAV (GPS) RWY 15

KENOSHA RGNL (ENW)

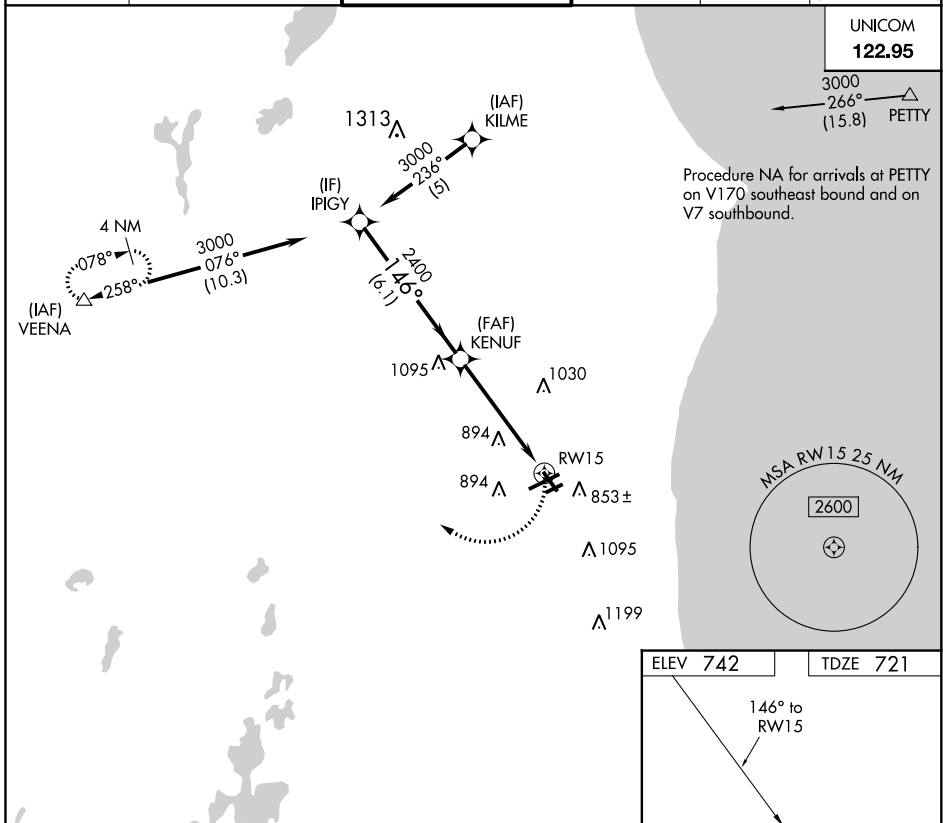
RNP APCH.

**▼** Rwy 15 helicopter visibility reduction below 1 SM NA. Straight-In and Circling Rwy 15 NA at night, Circling Rwy 7R NA at night.

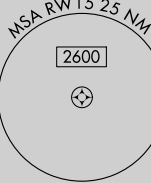
**MISSED APPROACH:**  
Climbing right turn to 3000  
direct VEENA and hold.

ATIS <b>127.175</b>	MILWAUKEE APP CON <b>135.875 317.725</b>	KENOSHA TOWER * <b>118.6 (CTAF) 0 353.6</b>	GND CON <b>121.875</b>	CLNC DEL <b>121.875</b>	CLNC DEL <b>118.6</b> (When twr closed)
------------------------	---------------------------------------------	------------------------------------------------	---------------------------	----------------------------	-----------------------------------------------

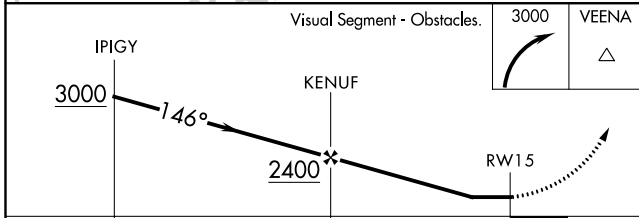
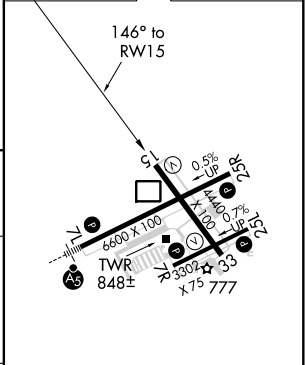
UNICOM  
**122.95**



Procedure NA for arrivals at PETTY on V170 southeast bound and on V7 southbound.



ELEV 742	TDZE 721
----------	----------



CATEGORY	A	B	C	D
LNNAV MDA	1200-1	479 (500-1)	1200-1 $\frac{3}{8}$ 479 (500-1 $\frac{3}{8}$ )	1200-1 $\frac{1}{2}$ 479 (500-1 $\frac{1}{2}$ )
CIRCLING	1200-1	458 (500-1)	1200-1 $\frac{1}{2}$ 458 (500-1 $\frac{1}{2}$ )	1340-2 598 (600-2)

EC-3, 22 APR 2021 to 20 MAY 2021

EC-3, 22 APR 2021 to 20 MAY 2021