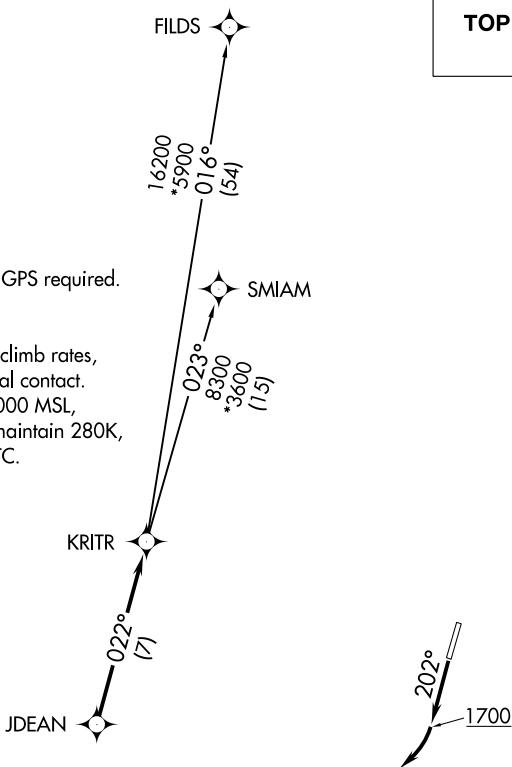


KRITR FIVE DEPARTURE (RNAV)

AWOS-3
118.175
CLNC DEL
127.35
UNICOM
122.725 (CTAF)
CHARLOTTE DEP CON
128.32 307.8

**TOP ALTITUDE:
3000**

- NOTE: For turbojets only.
- NOTE: DME/DME/IRU or GPS required.
- NOTE: RNAV 1.
- NOTE: RADAR required.
- NOTE: If unable to accept climb rates, advise ATC on initial contact.
- NOTE: Upon reaching 10000 MSL, accelerate to and maintain 280K, if unable advise ATC.



TAKEOFF MINIMUMS

- Rwy 2: Standard.
- Rwy 20: 400-2¾ or standard with minimum climb of 205' per NM to 1300, or alternatively, with standard takeoff minimums and a normal 200' per NM climb gradient, takeoff must occur no later than 1200' prior to DER.

NOTE: Chart not to scale.



DEPARTURE ROUTE DESCRIPTION

TAKEOFF RWY 20: Climb heading 202° to 1700 before turning right.

Climb on heading assigned by ATC, expect RADAR vectors to JDEAN, then on track 022° to KRITR, then on assigned transition. Maintain 3000, expect filed altitude within 10 minutes after departure.

- FILDS TRANSITION (KRITR5.FILDS)
- SMIAM TRANSITION (KRITR5.SMIAM)