

WAAS CH 42521 W20A	APP CRS 202°	Rwy Idg TDZE 772 Apt Elev 772	5501
--	------------------------	---	-------------

RNAV (GPS) RWY 20

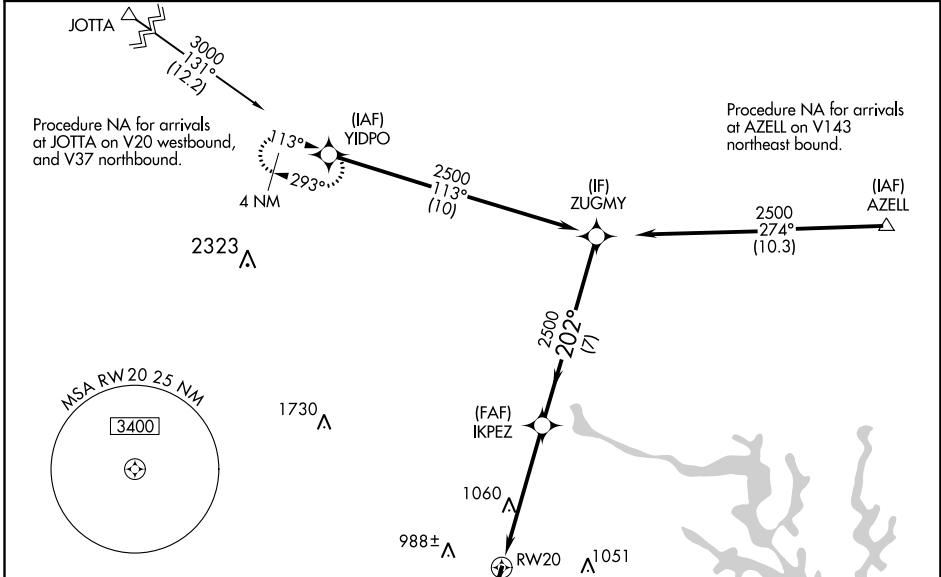
MID-CAROLINA RGNL (RUQ)

⚠ For uncompensated Baro-VNAV systems, LNAV/VNAV NA below -16° C (4°F) or above 39°C (102°F). DME/DME RNP-0.3 NA. When local altimeter setting not received, use Lexington altimeter setting and increase all DA 37 feet and all MDA 40 feet, increase LNAV Cat C and D visibility ½ SM and Circling Cat C visibility ½ SM and Circling Cat D ¼ SM. For inop ALS when using Lexington altimeter setting, increase LNAV Cat C and D visibility to 1¼ SM. VDP and Baro-VNAV NA when using Lexington altimeter setting. For inop ALS, increase LNAV/VNAV visibility to ¾ SM all Cats.

MALS
AS

MISSED APPROACH:
Climb to 2100 then climbing right turn to 3400 direct YIDPO and hold.

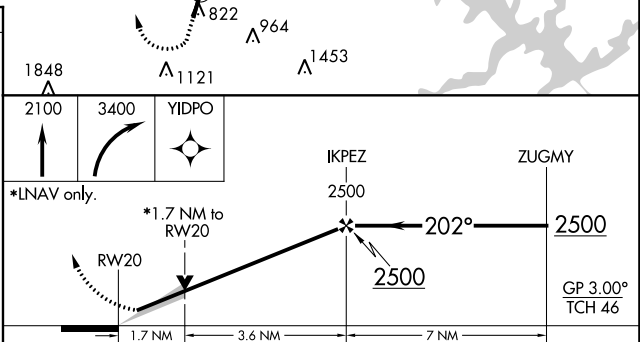
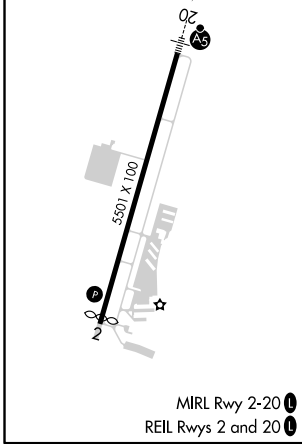
AWOS-3 118.175	CHARLOTTE APP CON 128.325 307.8	CLNC DEL 127.35	UNICOM 122.725 (CTAF)
--------------------------	---	---------------------------	---------------------------------



SE-2, 22 APR 2021 to 20 MAY 2021

SE-2, 22 APR 2021 to 20 MAY 2021

ELEV 772	TDZE 772
-----------------	-----------------



CATEGORY	A	B	C	D
LPV DA		972-½	200 (200-½)	
LNAV/VNAV DA		1032-½	260 (300-½)	
LNAV MDA	1360-½	588 (600-½)	1360-¼	588 (600-¼)
CIRCLING	1360-1	588 (600-1)	1440-1¾ 668 (700-1¾)	1440-2 668 (700-2)